



NEXT STOP REVERE

FORUM

Prepared for the City of Revere
Prepared by the Metropolitan Area Planning Council (MAPC)
Wednesday May 8, 2019



WELCOME & INTRODUCTIONS

- Mayor Arrigo
- *Next Stop Revere* Steering Committee
- Metropolitan Area Planning Council

STEERING COMMITTEE

Aklog Limeneh	Planning Board Member, BIC, Suffolk Downs DAG
Carol Tye	School Committee; Superintendent Emerita, BIC, DAG
Chris Bright	Chief of Fire, Revere Fire Department, Suffolk Downs PRB
David Eatough	Conservation Commission Member, Revere High School Teacher
Dean Harris	Director of Maintenance and Modernization, Revere Housing Authority
Dianne Kelly	Superintendent, Revere Public Schools
Ed Deveau	Planning Board Member, BIC, Suffolk Downs DAG, Chamber
Fatou Drammeh	Coordinator, Revere Community School, WEE, Haymarket People's Fund
Gianpiero Tirella	Resident
James Guido	Chief of Police, Revere Police Department, Suffolk Downs PRB
Kim Hanton	Director of Diversionary Addiction Services, North Suffolk Mental Health, Board of Health
Nicholas Granitsas	Revere, First Congregational Church
Olga Tacure	Network Leader, PTO Vice President, PLTI, WEE, RHS, PTO, Union Capital
Paul Argenzio	Superintendent, Public Works, Traffic Commission
Rafael Mares	Executive Director, The Neighborhood Developers
Ralph DeCicco	Chair/APA Coordinator, Disabilities Commission
Stephen Fielding	Director of Elder Affairs, Elder Affairs, Senior Center
Sylvia Chiang	Director, Revere CARES, MGH, Revere on the Move
Wendy Millar-Page	Executive Director, Chamber of Commerce



AGENDA

01 Welcome

02 Presentation

03 Break-Out Sessions

04 Closing



WHAT IS A MASTER PLAN?

A Master Plan is a **strategic framework** that guides the future **physical and economic development** of a city based on the **community's vision and goals**.

It is your plan, your vision and your goals.

The Master Plan provides the City with:

A **vision** for its future
Goals and strategies to capitalize on
opportunities

An **action plan** for shaping **positive change**

PLANNING PROCESS

**The Master Plan will
take 1 year to
complete.**

**We will have
opportunities for
community members
to provide feedback
throughout the
process.**

WINTER 19

Open House
January 15
Rumney Marsh
Academy

SPRING 19

**Two Community
Forums on the
Following Topics:**

APRIL 10th

- Housing
- Economic
Development
- Historic and
Cultural Resources

MAY 8TH

- Open Space and
Recreation
- Public Health
- Energy & Climate
- Transportation and
Mobility

SUMMER 19

**Community
Feedback**

**Draft Plan
Development**

FALL 19

**Community
Feedback on Draft
Plan**

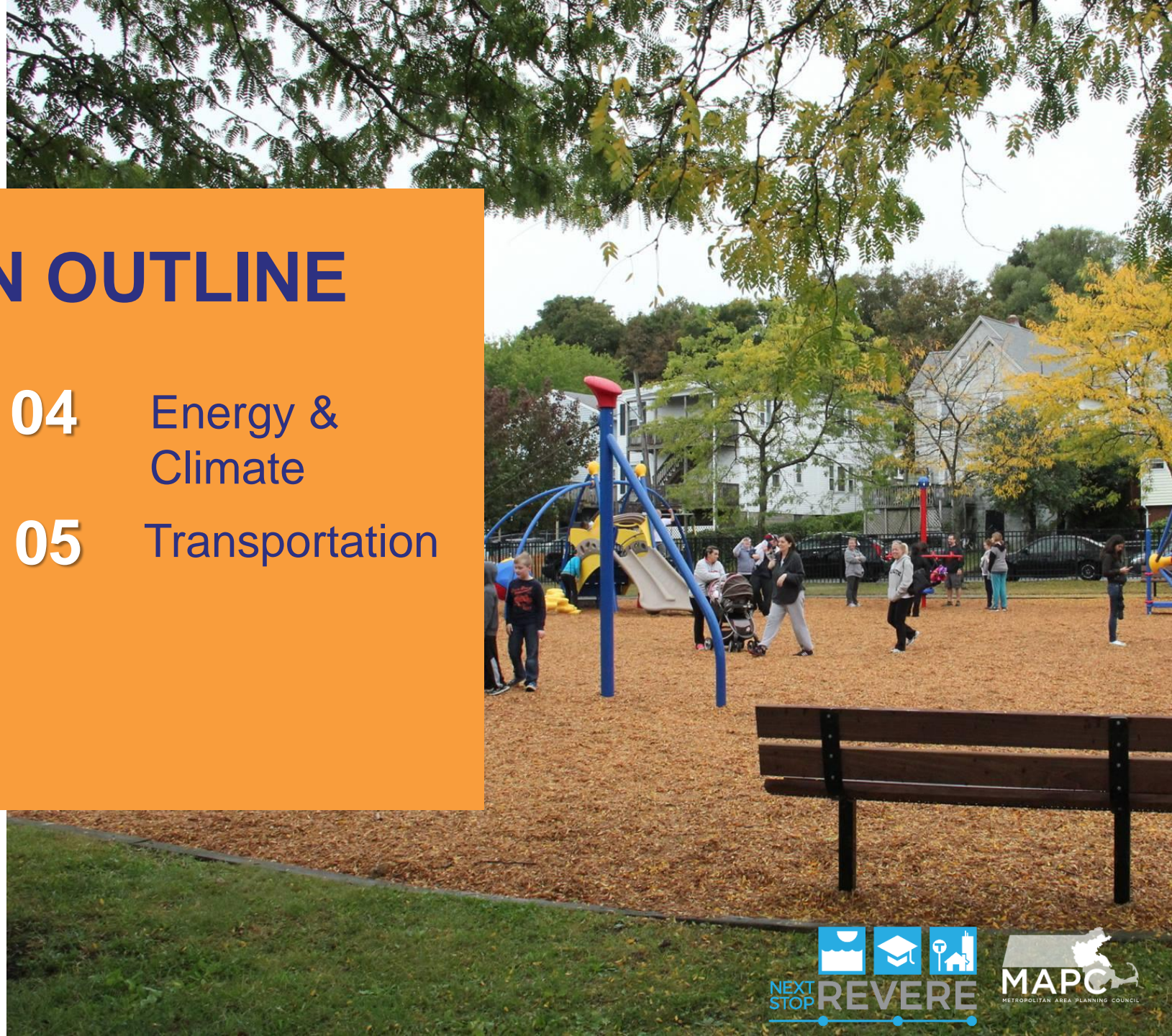
Final Plan Written

WINTER 20

**Final Plan presented
to Planning Board**

PRESENTATION OUTLINE

- | | |
|----------------------------|----------------------------|
| 01 Forum 1 Feedback | 04 Energy & Climate |
| 02 Open Space | 05 Transportation |
| 03 Public Health | |



KICK-OFF FEEDBACK



- 140+ Participants
- 20 people used Spanish interpretation services
- Free childcare services were utilized



Photo Credits: C. Molens, R. Mondestin



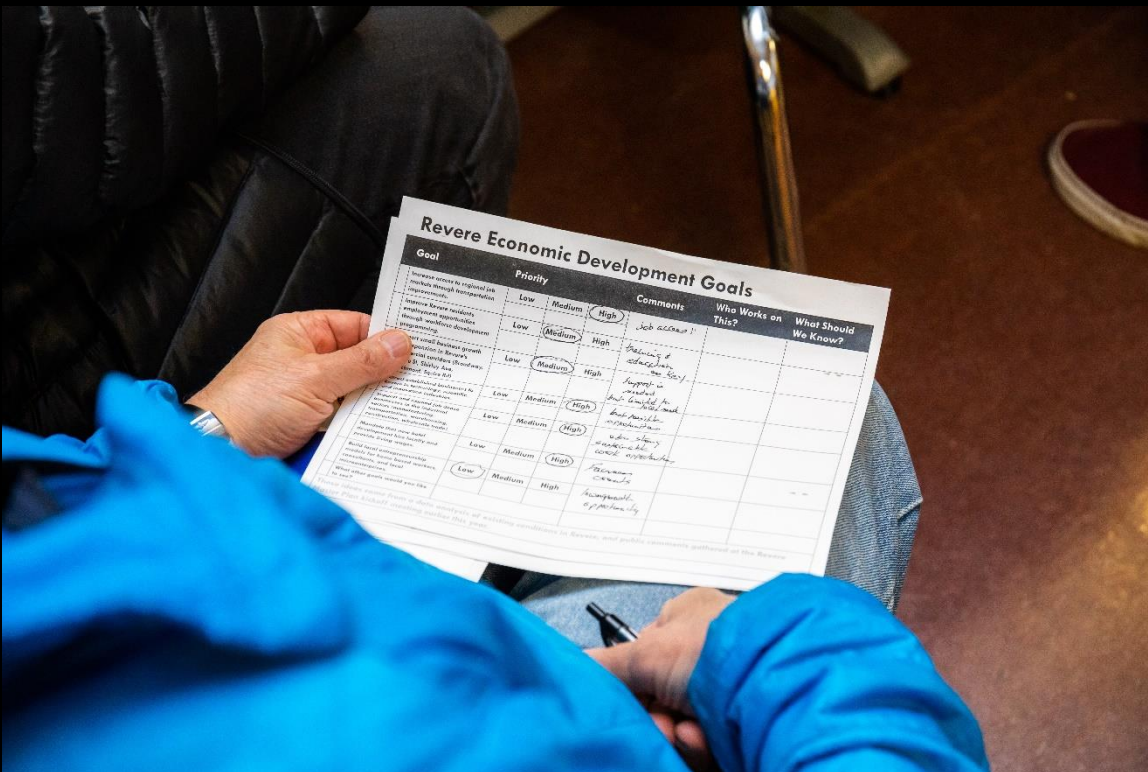


Photo Credits: C. Molens, R. Mondestin





Photo Credits: C. Molens, R. Mondestin

HOUSING

HOUSING



Draft Housing Goals

- **Highest amount of support for**
 - **Promote access to home ownership**
 - **Protect tenants from landlord abuse**
- **Affordable Housing**
 - Preserve existing public and private deed-restricted Affordable Housing
 - Create new deed-restricted Affordable Housing
 - Encourage naturally occurring affordable housing by allowing diverse and unique housing types

ECONOMIC DEVELOPMENT

ECONOMIC DEVELOPMENT



Draft Economic Development Goals

- **Highest amount of support for**
 - **Support small business growth**
 - **Workforce development**
 - Improve Revere residents' employment opportunities through workforce development programs
 - Mandate that new hotels hire locally, provide living wages
 - Increase access to regional job markets through transportation improvements

HISTORIC & CULTURAL RESOURCES



HISTORIC & CULTURAL RESOURCES



Draft Historic & Cultural Resource Goals

- **Highest amount of support for**
 - Increase funding for arts & cultural events/programs
 - Provide affordable gathering spaces
 - Document stories of Revere's diverse communities
 - Arts education



OPEN SPACE & RECREATION

Revere's 2018 Open Space and Recreation Plan (OSRP)



2018-2025 Update

Revere Open Space & Recreation Plan

June 2018

Prepared for:
City of Revere Department of Planning
and Community Development
Revere, MA 02151

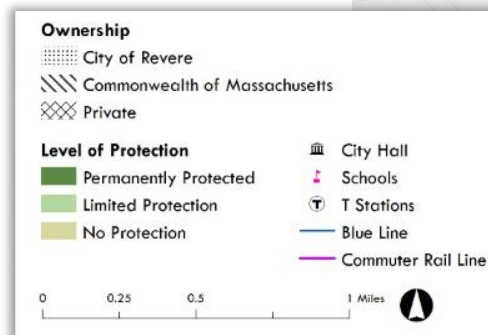
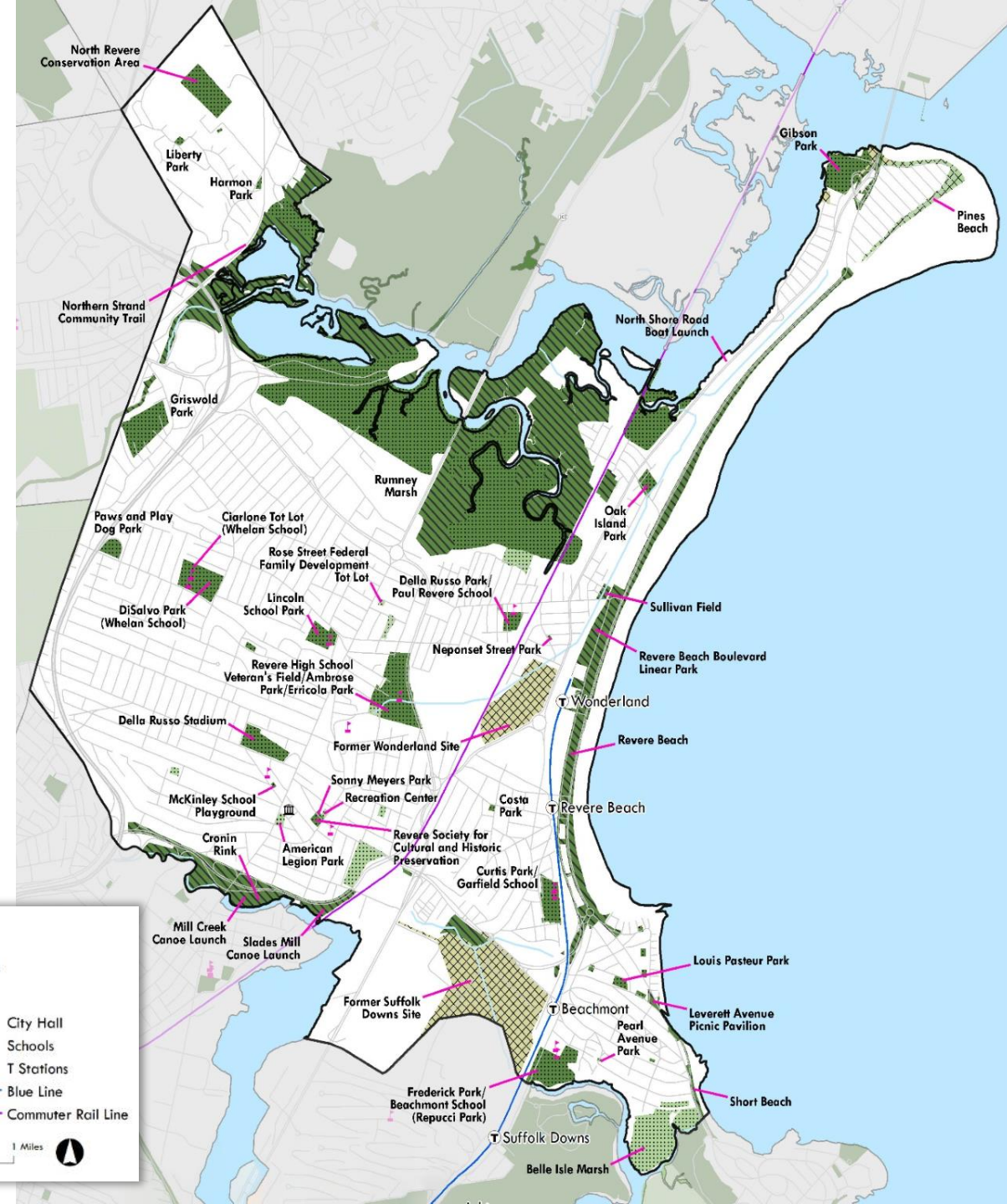
Prepared by:
Metropolitan Area Planning Council
Boston, MA 02111
www.mapc.org



- The **OSRP** provides information about the community, its environmental and recreational resources, and what residents want to achieve in the next **7 years**
- The **OSRP** helps encourage community **protection** and **stewardship** of these vital resources
- Completion of an **OSRP** makes municipalities **eligible** to apply for State **grants** through the **EOEEA** to **acquire** and **improve** land for conservation and recreation

Revere's Open Space & Recreation Inventory

- Open space varies by **ownership**, **level of protection**, and **use**
- The City of Revere maintains a variety of parks and open spaces totaling more than **200 acres**
- The State owns more than half of the open space in Revere. The Department of Conservation and Recreation (**DCR**) owns and manages **Revere Beach Reservation**



FEEDBACK FROM JANUARY 15TH KICK-OFF: OPEN SPACE & RECREATION



General Feedback

- We need an indoor recreation facility (e.g. YMCA)
- Overall, need for more green spaces.
- Different recreation services are needed for different age groups and populations
 - Especially the elderly and younger children

What we heard then and now...

June 2018 OSRP Feedback

- Establish an indoor recreation facility
- Acquire additional open space
- Add more programming: camps, classes, cultural events, etc.
 - Provide more activities for senior citizens

January 2019 *Next Stop Revere* Kick-Off Feedback

- We need an indoor recreation facility (e.g. YMCA)
- Overall, need for more green spaces.
- Different recreation services are needed for different age groups and populations
 - Especially the elderly and younger children



Open Space & Recreation City Initiatives

- Several projects from the 2018 OSRP 7 year action plan are moving actively ahead: Gibson Park, Curtis Park, Costa Park, and the Northern Strand Community Trail connecting to Harmon Park in North Revere
- Garfield School Community Center
- Expanded Programming at the Recreation Department

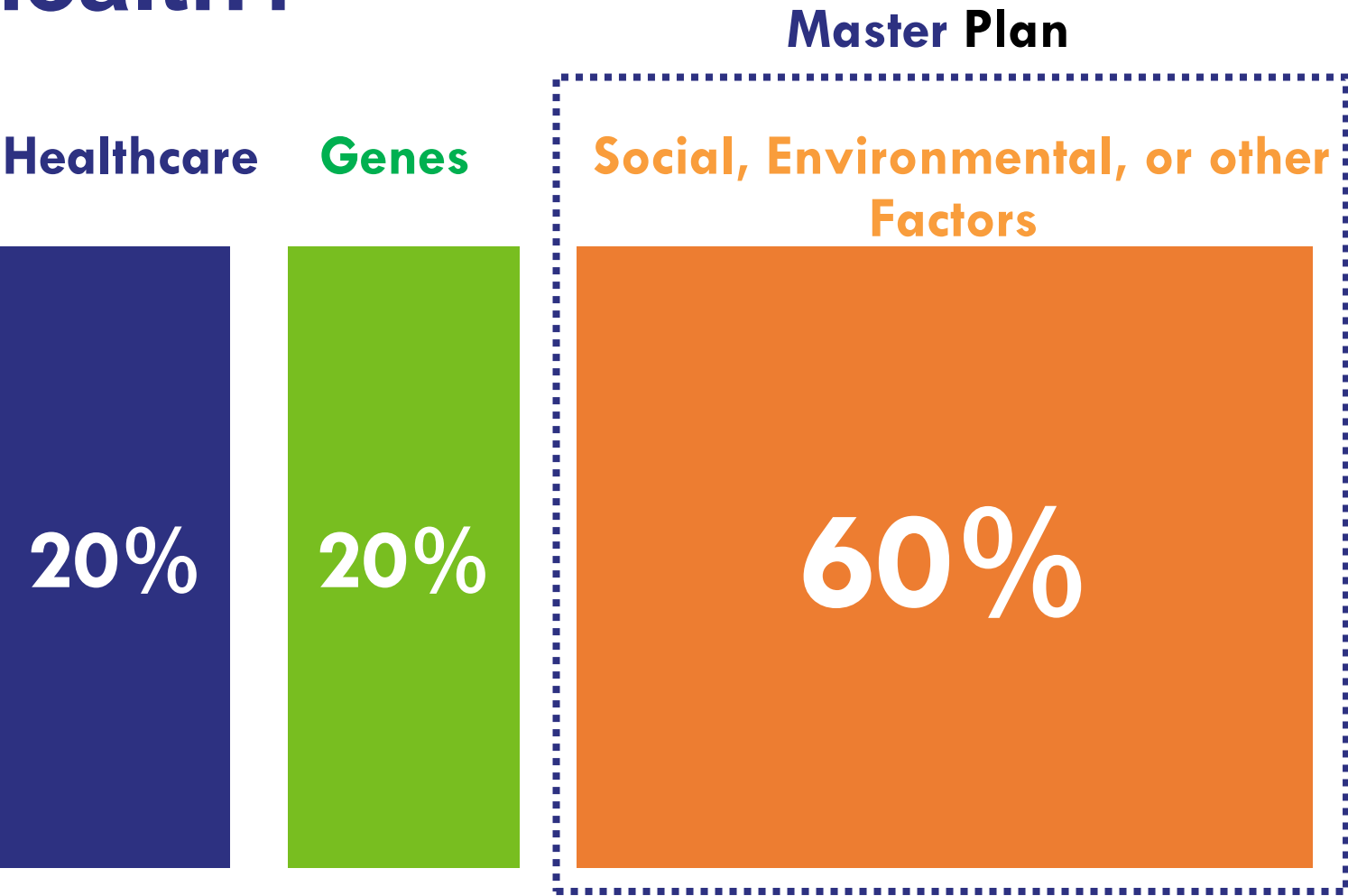


Open Space & Recreation Key Points

- Three key things to keep in mind when participating in tonight's Open Space & Recreation Exercise
 - Further reinforces the 2018 OSRP
 - Helps to refine the City's vision for its Parks and Open Spaces
 - Provides an opportunity to gather additional Input

PUBLIC HEALTH

What determines community health?



Source: Slide from The American Healthcare Paradox, Lauren Taylor; Original Source: McGinnis et al, 2002

FEEDBACK FROM JANUARY 15TH KICK-OFF: PUBLIC HEALTH

Assets

- Neighborhood walkability
- Accessibility of beach
- Healthy food access
- Transit access
- Bike and walking trails

Concerns

- Unsafe streets for pedestrians
- Traffic-related air and noise pollution
- No indoor recreation facility or pool
- Limited places for young people
- Limited green space + vegetation
- Marijuana
- Domestic violence



What are the largest health problems Revere?

Revere's top 5 health concerns:

1. Substance use and overdoses (58%)
2. Mental health (36%)
3. Environment (air quality, flooding, etc.) (35%)
4. Affordable housing (30%)
5. Poverty (23%)



PUBLIC HEALTH

City Initiatives

- **MAPC Pocket Park Study**
 - The City is working with MAPC to see whether small parks could be created on vacant City-owned land.
- **Integrated Community Health Needs Assessment**
 - North Suffolk Public Health Collaborative study of several communities
- **Food Access Initiatives**
 - Healthy Community Initiatives is working on expanding access to healthy, affordable food



OPEN SPACE & PUBLIC HEALTH Key Points

- When you think about the community 5 years from now, what would you like to see?
- How can we help this vision become a reality?
- Revere is exploring developing smaller parks on open city land, called 'Pocket Parks.' **What you would like to see in a Pocket Park and how would like to use it?**

ENERGY & CLIMATE

FEEDBACK FROM JANUARY 15TH KICK-OFF: ENERGY & CLIMATE

- Need for more open space, green space, and street trees
- People are already experiencing flooding in certain areas
- People were surprised to see how much of the city is impacted by heat waves and extreme heat
- Need for tools to address climate change (both reducing carbon pollution and increase resilience)
- Need to improve recycling program and address litter

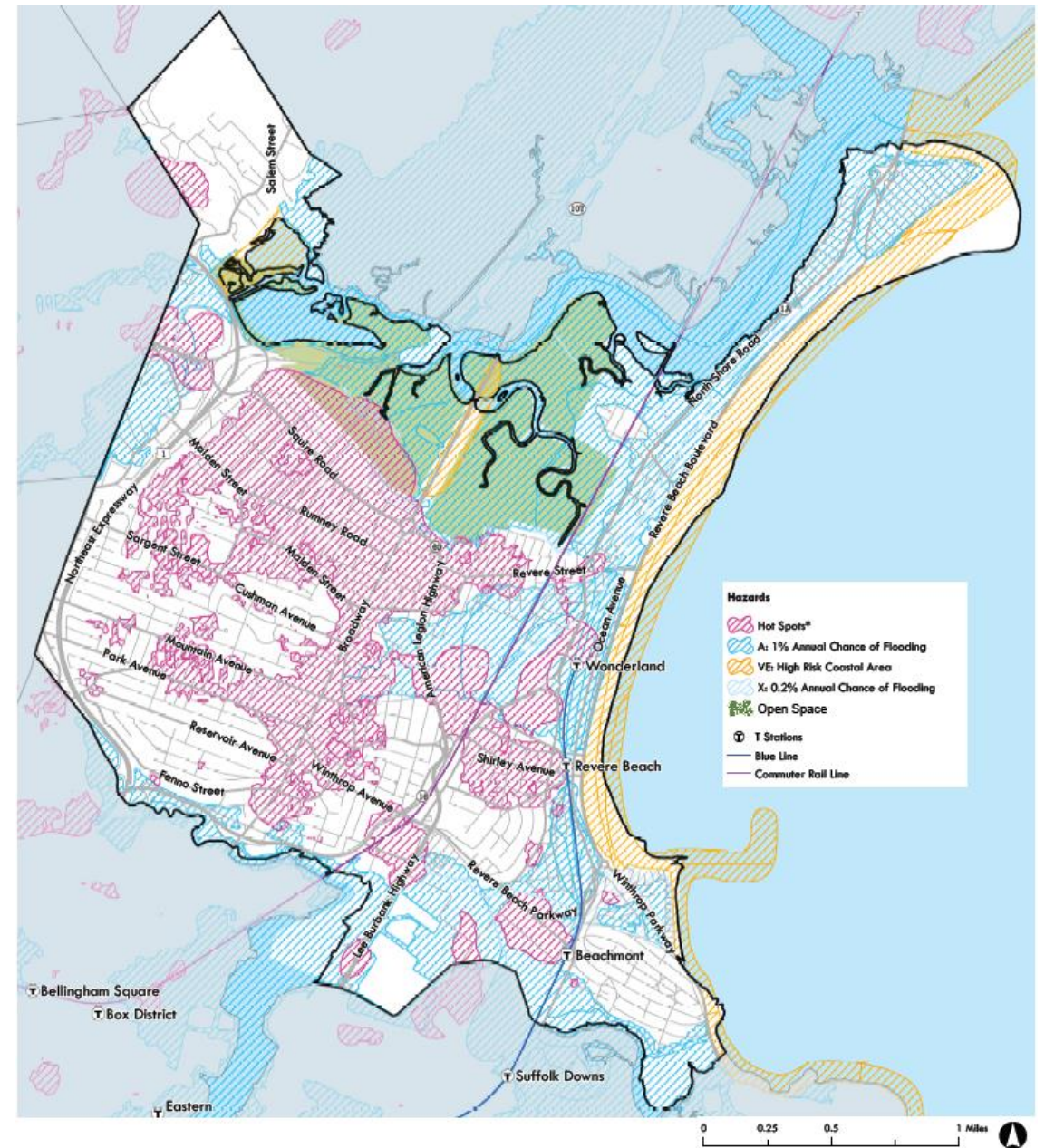


Energy Use:

- Annual electricity usage for residential has been stable for the past several years.
- Energy in commercial and industrial sector has increased.
- Natural gas usage (for heating) has increased in all sectors.

Climate Change Impacts:

- Urban heat island effect is experienced across much of Revere.
- Critical areas already experience flooding from coastal storms and inland/river flooding.



FEMA flood zones and urban heat islands in Revere.



ENERGY & CLIMATE City Initiatives

- **Municipal Vulnerability Preparedness program (spring 2019)**
- **Tree Initiatives include Greening the Gateway Cities and Tree City USA**
- **City Council approved ban on single-use plastic bags and launched textile recycling program (2019)**
- **Beautify Revere event**



ENERGY & CLIMATE Key Points

- What initiatives should the City do **to reduce energy usage and carbon pollution** for the municipality, residents, and businesses?
- What initiatives should the City do **to increase preparedness and resilience** to the impacts of climate change?
- What other issues around **energy, climate and the environment** are important to you?

TRANSPORTATION

FEEDBACK FROM JANUARY 15TH KICK-OFF: TRANSPORTATION

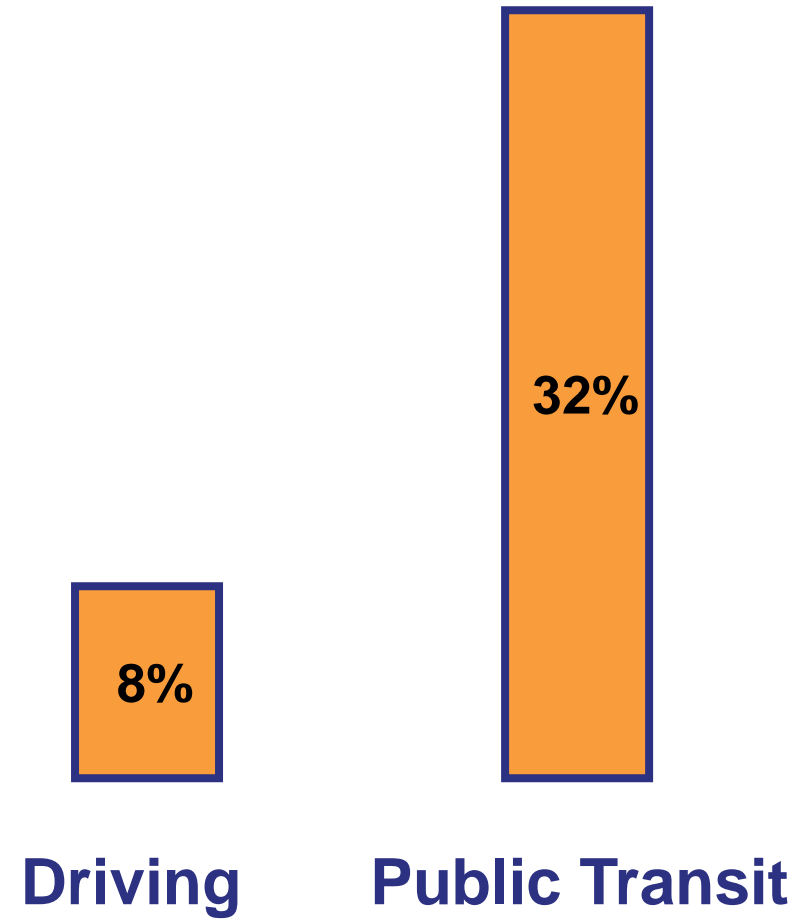
General Feedback

- Importance of access to open space, waterfront
- Economic development: untapped potential in making Revere more walkable → enhancing access to businesses
- Traffic
 - Concern about traffic generated by new housing development, particularly the larger waterfront developments
- Pedestrian safety
 - A major concern, especially following death of 2 young children
 - Need for pedestrian bridges. Concern re: commuters and others using Revere as a cut-through.
 - Bell Circle and the rotaries. Concerns re: students dropping out because of transit issues at Bell Circle.
- Potential Bike Revere, bike group

Safe = ● Unsafe = ●

- **53% of Revere residents work in either Revere or Boston.**
- **67% of Revere residents drive to work, while 27% take public transit.**

Commute Time Over 60 Minutes





TRANSPORTATION City Initiatives

- **Complete Streets Planning**
- **Traffic studies & analysis**
 - The City is working with neighboring municipalities and private developers to study traffic impacts of new roads and developments
- **Walkability**
 - The City is leading efforts with key partners to improve public safety and the pedestrian environment



TRANSPORTATION Key Points

- What kind of pedestrian and bicycle improvements should be prioritized, and where?
- If all services were available to you, how would you prefer to get around?
- What are your favorite or most frequent destinations in Revere that you would like to get to more easily?

WE WANT TO HEAR FROM YOU!

- **Social Media**
- **Surveys**
- **Community
Forums**



- **Interviews**
- **Focus Groups**
- **Outreach to
stakeholders**



Next Stop Revere Website!

- See up-to-date plan information & community data
- Mobile friendly!
- www.revere.org/NextStopRevere

Next Stop Revere

- What is a Master Plan?
- Plan Elements
- Schedule & Documents
- Latest Updates
- Get Involved
- Demographics
- Jobs & Employment
- Education
- Housing
- Public Health
- Transportation
- Land Use

Your Plan, Your Vision, Your Goals



Revere is embarking on a yearlong journey to design a shared vision and goals for our community. Join us!

The City of Revere is working with the Metropolitan Area Planning Council (MAPC) to develop a comprehensive plan to guide Revere into the future.

Through citywide visioning sessions, shared goal-setting, data analysis, and significant community involvement, the Next Stop Revere planning process will support Revere's efforts to translate the community's values into strategic and specific actions. With the support of MAPC, and through the sustained engagement of residents and community partners, Revere will develop a policy and planning blueprint to guide action and investment over the next 10-20 years.

It's a really exciting process. Revere hasn't done a master plan since 1971. To be able to be here with a room full of people, a standing room only crowd, it's amazing to see that many people showing up and being interested, and it's really what a planning process is about.

Learn More



What is a Master Plan?

A Master Plan is a policy guide that provides a framework for the physical development of a municipality. It tells a community what it looks like today and what direction it wants to go in the future.

[Learn More](#)



Plan Elements

What does a master plan include? Every master plan covers includes key sections that dive into specific aspects of our community, and help guide decisions in the future.

[Learn More](#)



Schedule and Documents

How is a Master Plan made? The planning process is championed by a steering committee, but relies on input from our residents and in-depth studies of our community.

[Learn More](#)



Get Involved

YOU can help direct the future of our community! Learn more below and see how you can get involved in this process.

[Learn More](#)

Next Stop Revere

- What is a Master Plan?
- Plan Elements
- Schedule & Documents
- Latest Updates
- Get Involved
- Demographics
- Jobs & Employment
- Education
- Housing
- Public Health
- Transportation
- Land Use

Jobs & Employment



Revere's growth and how it benefits local residents are important themes for Next Stop Revere. Insights into the strengths and needs of Revere's workforce can help inform master plan recommendations that can encourage the creation of good jobs and economic opportunities in Revere and the region.

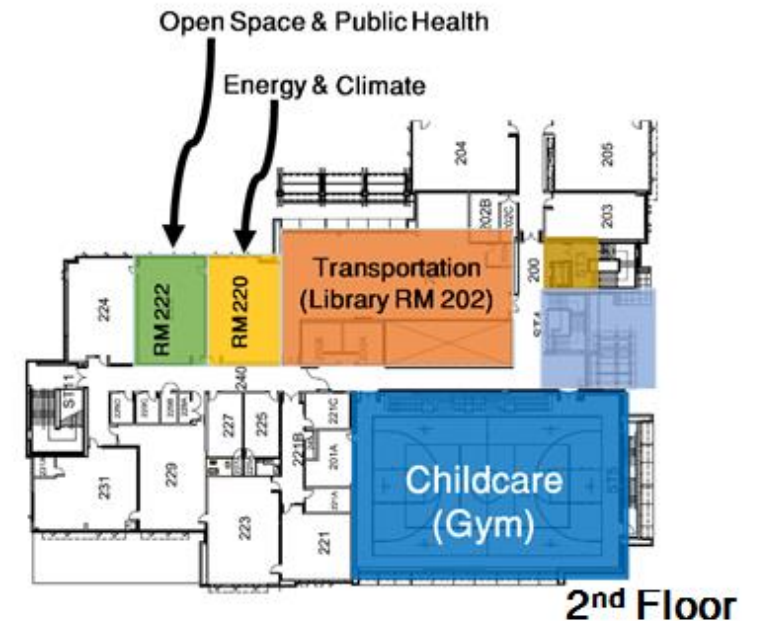
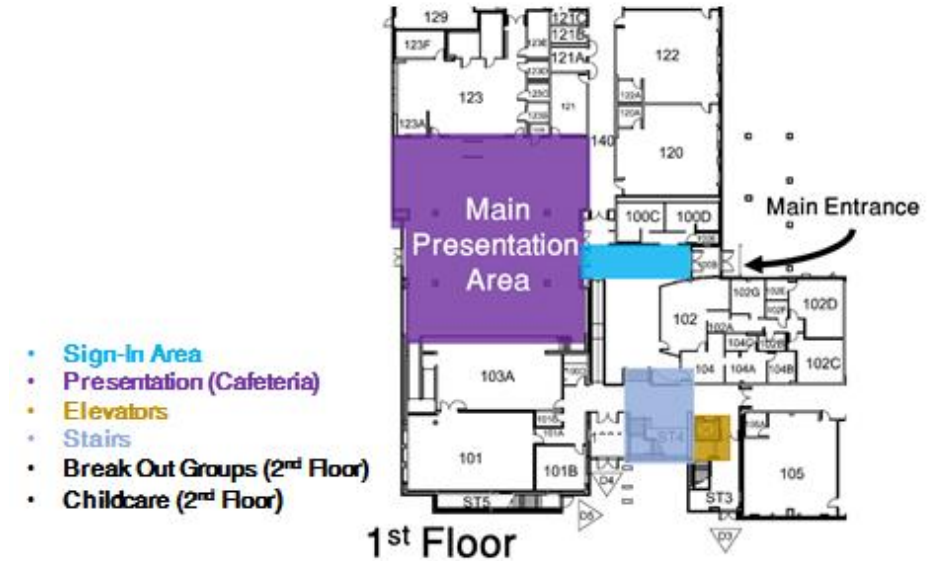


AGENDA

- 6:45 PM: Breakout Group Sessions
 - Open Space and Public Health (Rm 222)
 - Energy & Climate (Rm 220)
 - Transportation (Library)
- 7:30 PM: Debrief and Group Sharing (Cafeteria)
- 8:00 PM: Closing

Choose the topic that interests you

Event Map (Hill School)





**NEXT
STOP** REVERE

STAY CONNECTED!
www.revere.org/NextStopRevere

