

**Revere School Committee and School Building Committee Joint Meeting Agenda
September 26, 2023**

A Joint Meeting of the Revere School Committee and School Building Committee will be held on **September 26, 2023 at 4:00 in the Ferrante School Committee Room.**

Join Zoom Meeting

<https://us02web.zoom.us/j/87236168133?pwd=dIRteng3dFNDMnJoYk4ySmwzL1k5QT09>

Meeting ID: 872 3616 8133

Passcode: 492955

Watch on Revere School Committee YouTube

<https://www.youtube.com/c/revereschoolcommittee>

AGENDA:

1. Call Meeting to Order
2. Preferred Schematic Report Design Options Presentation
3. Public Comment
4. Vote to Adjourn Meeting

Note: The listed agenda items are those that are reasonably anticipated by the School Committee to be discussed at the meeting. Not all items, in fact, may be discussed, and other items not listed also may be brought up for discussion to the extent permitted by law.

Respectfully submitted,

Dianne K. Kelly, Ed.D
Superintendent of Schools

DK/rp

File: BEDH

PUBLIC PARTICIPATION AT SCHOOL COMMITTEE MEETINGS

All regular and special meetings of the School Committee shall be open to the public. Executive sessions will be held only as prescribed by the Statutes of the commonwealth of Massachusetts.

The Revere School Committee desires citizens of the District to attend its meetings so that they may become better acquainted with the operations and the programs of Revere Public Schools. In addition, the Committee would like the opportunity to hear the wishes and ideas of the Revere school community on matters within the scope of their authority. These matters include the budget for the Revere Public Schools, the performance of the Superintendent, and the educational goals and policies of the Revere Public Schools.

In order that all citizens who wish to be heard before the Committee have a chance and to ensure the ability of the Committee to conduct the District's business in an orderly manner, the following rules and procedures are adopted consistent with state and federal free speech laws:

1. At the start of each regularly scheduled School Committee meeting, individuals or group representatives who have signed up to speak will be invited to address the Committee during its 15-minute public comment period, which shall be known as Public Speak. Public Speak shall occur prior to discussion of Agenda items, unless the Chair determines that there is a good reason for rearranging the order at a public meeting that is unrelated to deterring participation in Public Speak.
2. All speakers are encouraged to present their remarks in a respectful manner.
3. Speakers must begin their remarks by stating their name, town or city of residence, and affiliation. All remarks will be addressed through the Chair of the meeting.
4. Public Speak shall concern items that are not on the School Committee's agenda, but which are the scope of the School Committee's authority. Therefore, any comments involving staff members or students must concern the educational goals, policies, or budget of the Revere Public Schools, or the performance of the Superintendent.
5. Assuming that four (4) or fewer speakers sign up to engage in public comment, each speaker will be allowed three (3) minutes each to present their material. If five (5) or more speakers sign up to engage in public comment, then each speaker will be allowed two (2) minutes each to present their material. No more than six (6) speakers will be accommodated at any individual meeting.
6. Large groups addressing the same topic are encouraged to consolidate their remarks and/or select a spokesperson to comment at Public Speak.
7. Speakers may not assign their time to another speaker, and in general, extensions of time will not be permitted. However, speakers who require reasonable accommodations on the basis Revere Public Schools of a speech-related disability or who require language interpretation services may be allotted a total of five (5) minutes to present their material. Speakers must notify the School Committee by telephone or email at least 48 hours in advance of the meeting if they wish to request an extension of time for one of these reasons.

8. The Chair of the meeting may not interrupt speakers who have been recognized to speak, except that the Chair reserves the right to terminate speech which is not Constitutionally protected because it constitutes true threats, incitement to imminent lawless conduct, comments that were found by a court of law to be defamatory, and/or sexually explicit comments made to appeal to prurient interests. Verbal comments will also be curtailed once they exceed the time limits outlined in paragraphs 5 and 7 of this policy and/or to the extent, they exceed the scope of the School Committee's authority.

Disclaimer: Public Speak is not a time for debate or response to comments by the School Committee. Comments made at Public Speak do not reflect the views or the positions of the School Committee. Because of constitutional free speech principles, the School Committee does not have the authority to prevent all speech that may be upsetting and/or offensive at Public Speak.

SOURCE: MASC
Amended by Revere School Committee: March 2019



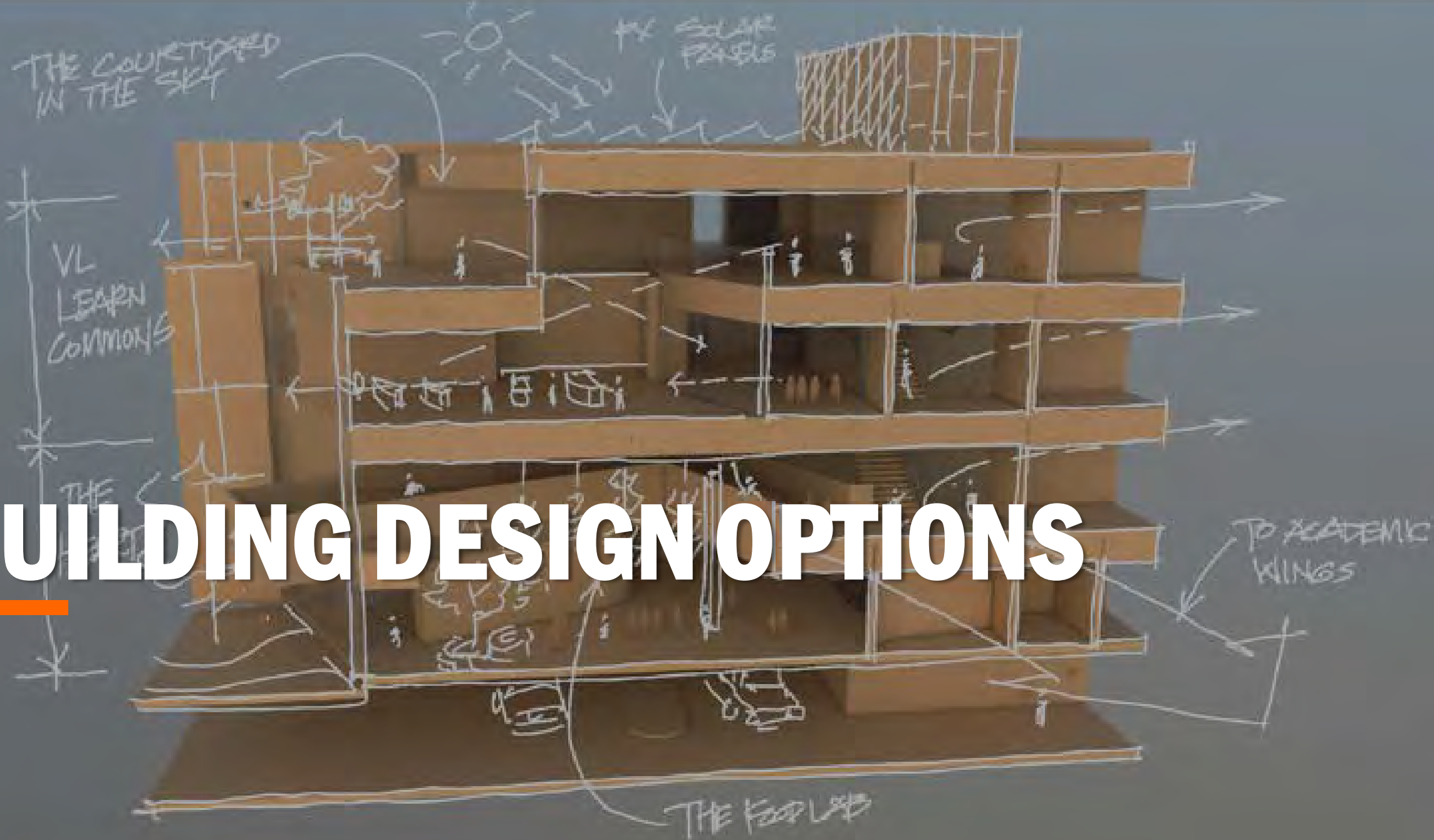
PERKINS —
EASTMAN

LEFTFIELD
THE RIGHT CHOICE IN PROJECT MANAGEMENT

REVERE HIGH SCHOOL

SCHOOL COMMITTEE UPDATE - SEPTEMBER 26, 2023

BUILDING DESIGN OPTIONS

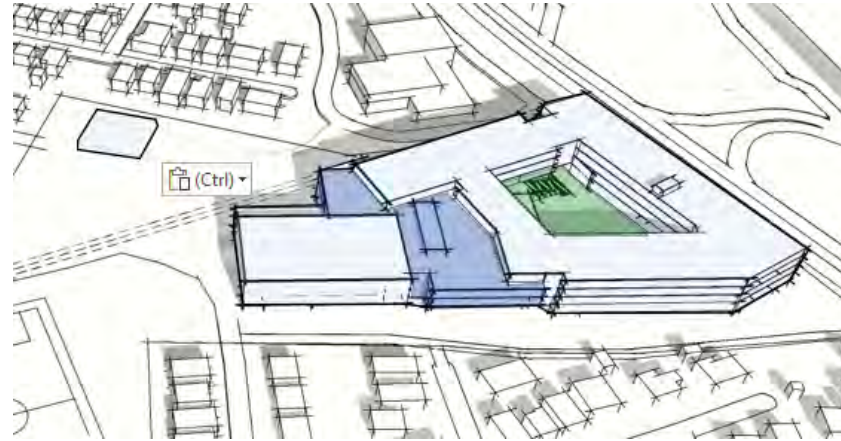


CURRENT DESIGN OPTIONS

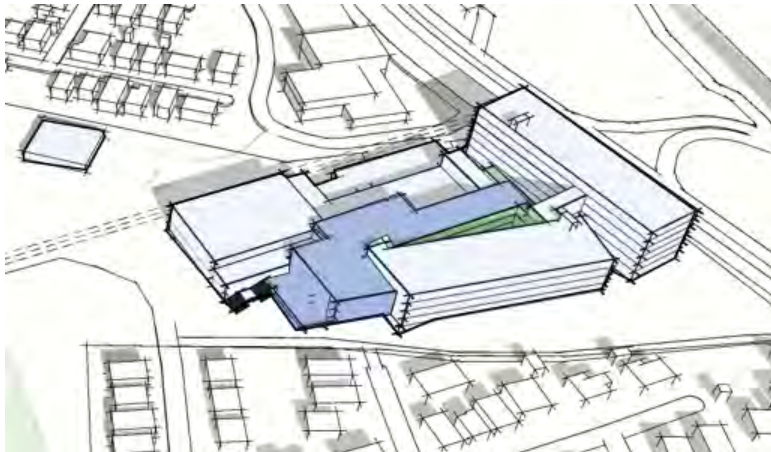


DO NOT RECOMMEND MOVING FORWARD FOR PRICING

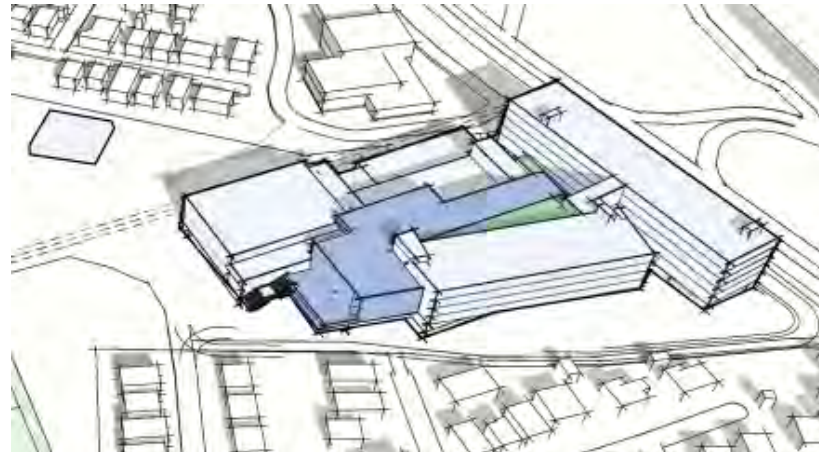
"H SCHEME- 6-STORY"



"COURTYARD- 4-STORY"



"TRIANGLE- 6-STORY"



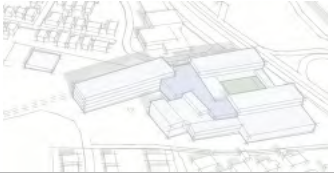
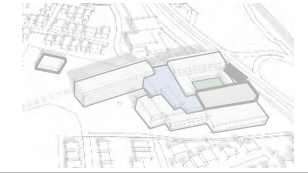
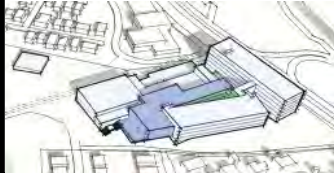
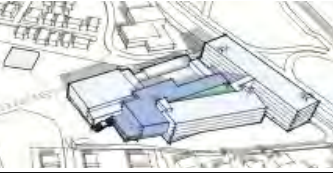
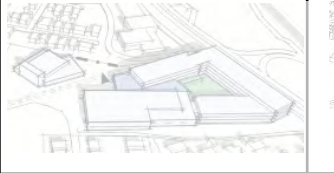
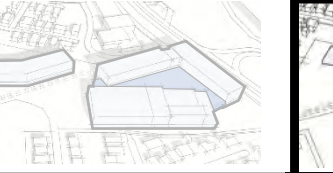
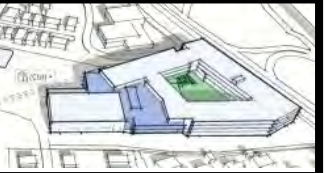
"TRIANGLE- ALT 1 5-STORY"

PER MSBA PROTOCOL, PRICING EXERCISES (SEPTEMBER/OCTOBER/NOVEMBER) MUST ALSO INCLUDE A CODE UPGRADE OPTION AND AN ADDITION/RENOVATION OPTION.

CURRENT OPTIONS

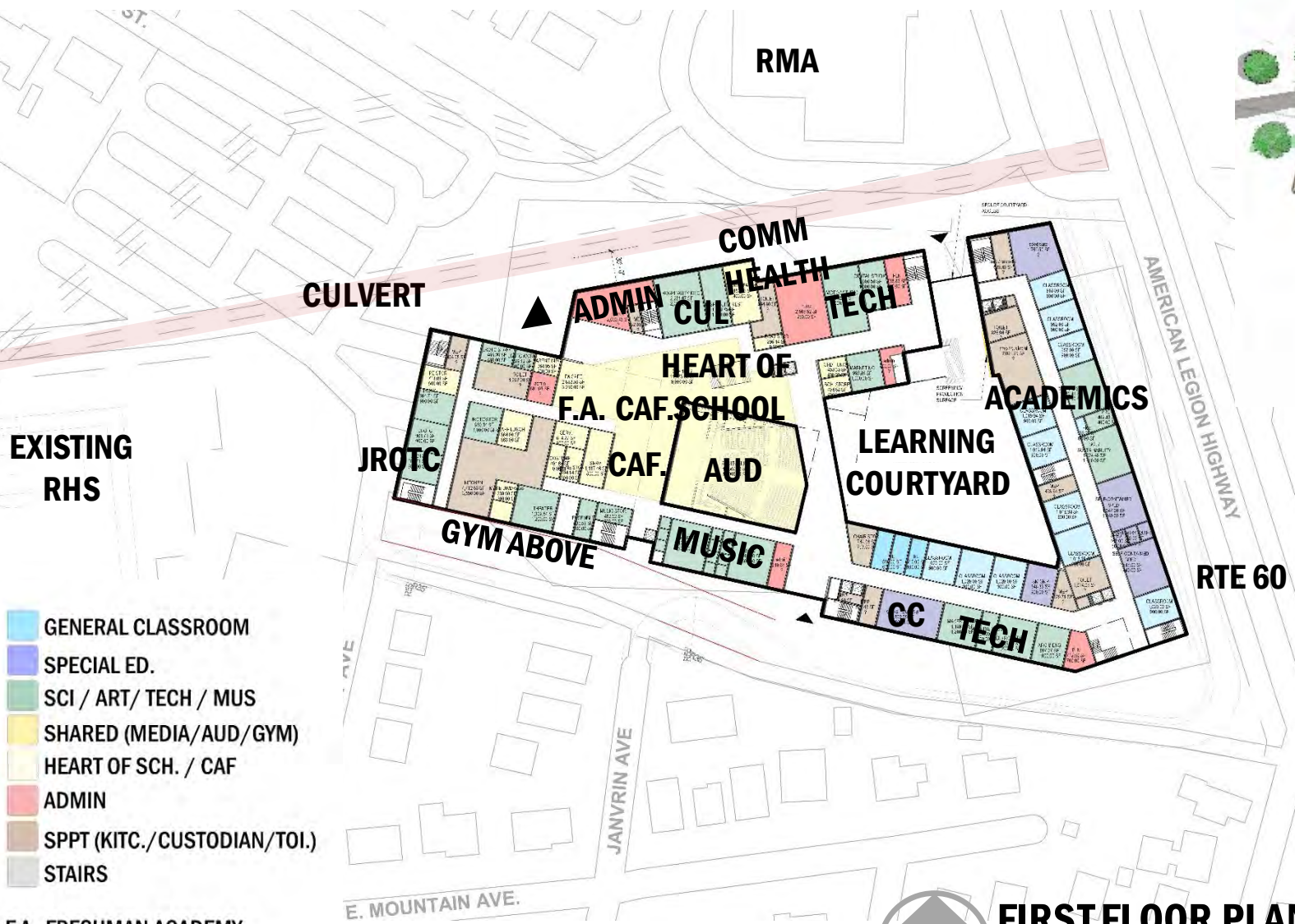
PER MSBA PROTOCOL, PRICING EXERCISES (SEPTEMBER/OCTOBER/NOVEMBER) MUST ALSO INCLUDE A CODE UPGRADE OPTION AND AN ADDITION/RENOVATION OPTION.

NEW AT ERRICOLA PARK

						
<p>H SCHEME 6-STORY MAXIMUM ACADEMIC WING</p> <p>SURFACE + UNDER PARK 2 FIELDS + 5 TENNIS 18.9 ac</p>	<p>H ALT 1 5-STORY MAXIMUM ACADEMIC WING</p> <p>SURFACE + UNDER PARK 2 FIELDS + 5 TENNIS 18.9 ac</p>	<p>TRIANGLE 6-STORY MAXIMUM ACADEMIC WING</p> <p>SURFACE + UNDER PARK 2 FIELDS + 5 TENNIS 18.9 ac</p>	<p>TRIANGLE ALT 1 5-STORY MAXIMUM ACADEMIC WING</p> <p>SURFACE + UNDER PARK 2 FIELDS + 5 TENNIS 18.9 ac</p>	<p>CAMPUS- PAC 4-STORY MAXIMUM ACADEMIC WING</p> <p>SURFACE + UNDER PARK 2 FIELDS + 5 TENNIS 18.9 ac</p>	<p>CAMPUS- FA 5-STORY MAXIMUM ACADEMIC WING</p> <p>SURFACE + UNDER PARK 2 FIELDS + 5 TENNIS 18.9 ac</p>	<p>COURTYARD 4- STORY MAXIMUM ACADEMIC WING</p> <p>SURFACE + UNDER PARK 2 FIELDS + 5 TENNIS 18.9 ac</p>
<p>DO NOT RECOMMEND</p> <p>MOVING FORWARD FOR PRICING</p> <ul style="list-style-type: none"> LARGE FOOTPRINT SPRAWLING ACADEMIC WINGS 6 STORY ACADEMIC WING 4-STORY FRESHMAN ACADEMY GOOD SOLAR ORIENTATION GYM FAR FROM FIELDS LONG TRAVEL DISTANCES 	<ul style="list-style-type: none"> LARGE FOOTPRINT SPRAWLING ACADEMIC WINGS 5 STORY ACADEMIC WING-SOME OVER GYM 4 STORY FRESH ACAD GOOD SOLAR ORIENTATION GYM FAR FROM FIELDS COMPACTED HEART OF THE SCHOOL LESS ORGANIZED SPLIT PROGRAM LONG TRAVEL DISTANCES 	<ul style="list-style-type: none"> MORE COMPACT FOOTPRINT ON-SITE STAGING = POSSIBLE REDUCED CONSTRUCTION COSTS 4- STORY HEART OF SCHOOL 6- STORY FRESHMAN ACADEMY + ACADEMIC WING GOOD SOLAR @ FRESHMAN ACADEMY E/W FACING ACADEMIC WING 	<ul style="list-style-type: none"> 4- STORY HEART OF SCHOOL 4-STORY FRESHMAN ACADEMY 5- STORY ACADEMIC WING GYM NEAR FIELDS GYM AT SECOND FLOOR EXTERIOR LIGHTWELLS FOR DAYLIGHTING COMMUNITY ENTRANCE AT SECOND FLOOR (?) GOOD SOLAR @ FRESHMAN ACADEMY E/W FACING ACADEMIC WING 	<ul style="list-style-type: none"> 2- STORY HEART OF SCHOOL 4- STORY ACADEMIC WING 4-STORY FRESHMAN ACADEMY PERFORMING ARTS AND DIST ADMIN IN SEPARATE BUILDING ACROSS CULVERT GYM NEAR FIELDS GYM AT FIRST FLOOR W/ LOCKERS+TEAM LEARNING COURTYARD E/W FACING ACADEMIC WING PEDESTRIAN ONLY ZONE REQUIRED BETWEEN BUILDINGS OPPORTUNITY TO CONNECT GRADE UP/OVER TO LEARNING COURTYARD REDUCED SURFACE PARKING DUE TO PAC BUILDING 	<ul style="list-style-type: none"> 2- STORY HEART OF SCHOOL 4- STORY ACADEMIC WINGS 4-STORY FRESHMAN ACADEMY GYM NEAR FIELDS GYM AT FIRST FLOOR W/ LOCKERS+TEAM LONG TRAVEL DISTANCES-BETWEEN BUILDINGS SPLIT PROGRAM LARGE FOOTPRINT REDUCED SURFACE PARKING DUE TO F.A. BUILDING OPPORTUNITY TO CONNECT GRADE UP TO ROOFTOP LEARNING 	<ul style="list-style-type: none"> ENCLOSED COURTYARD PROVIDES SECURE OUTDOOR LEARNING AND SOCIAL SPACES 3- STORY HEART OF SCHOOL 4- STORY FRESHMAN ACADEMY + GRADE 10-12 ACADEMIC WING GYM NEAR FIELD GYM AT SECOND FLOOR GOOD SOLAR @ FRESHMAN ACADEMY E/W FACING ACADEMIC WING OPPORTUNITY TO CONNECT GRADE UP/OVER TO LEARNING COURTYARD

COURTYARD- 4-STORY

DESIGN OPTIONS- "COURTYARD 4-STORY"

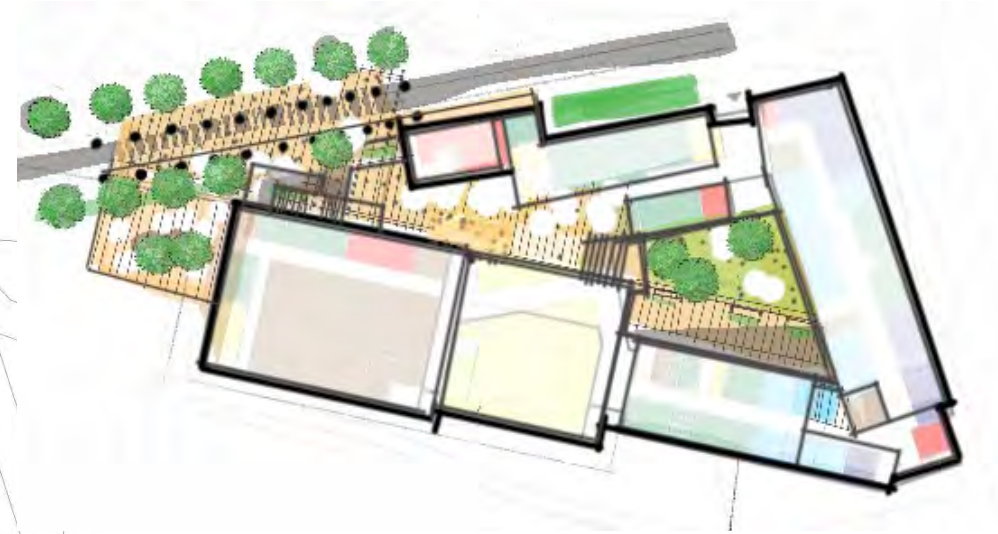


EXISTING
RHS

- GENERAL CLASSROOM
- SPECIAL ED.
- SCI / ART / TECH / MUS
- SHARED (MEDIA/AUD/GYM)
- HEART OF SCH. / CAF
- ADMIN
- SPPT (KITC./CUSTODIAN/TOI.)
- STAIRS

F.A. FRESHMAN ACADEMY

FIRST FLOOR PLAN

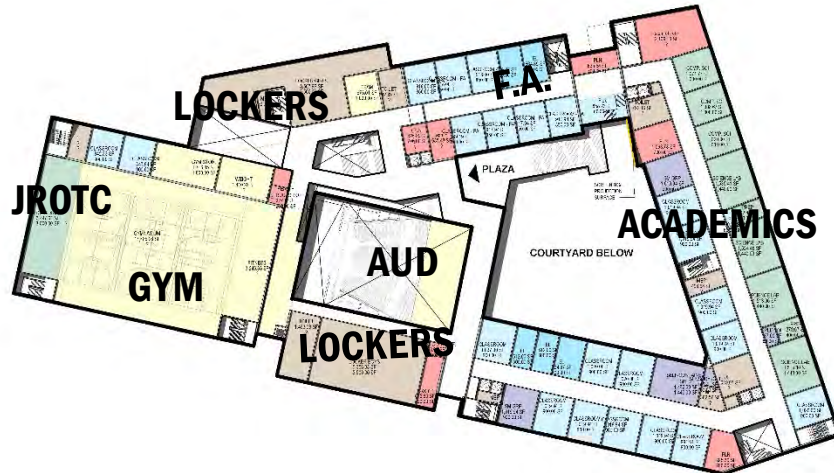


CONTEXT SKETCH

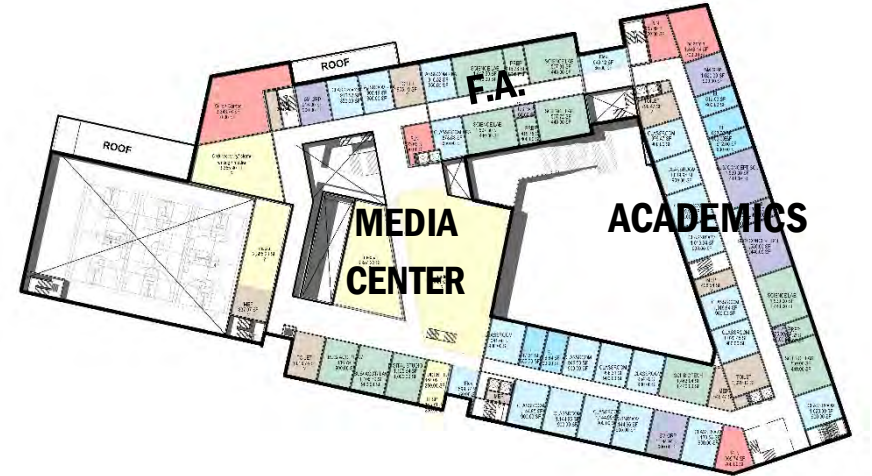
DESIGN CONSIDERATIONS

- 3- STORY HEART OF SCHOOL
- 4- STORY FRESHMAN ACADEMY + GRADE 10-12 ACADEMIC WING
- GYM NEAR FIELD
- GYM AND LOCKERS TOGETHER AT SECOND FLOOR
- GOOD SOLAR @ FRESHMAN ACADEMY
- E/W FACING ACADEMIC WING
- OPPORTUNITY TO CONNECT GRADE UP/OVER TO LEARNING COURTYARD

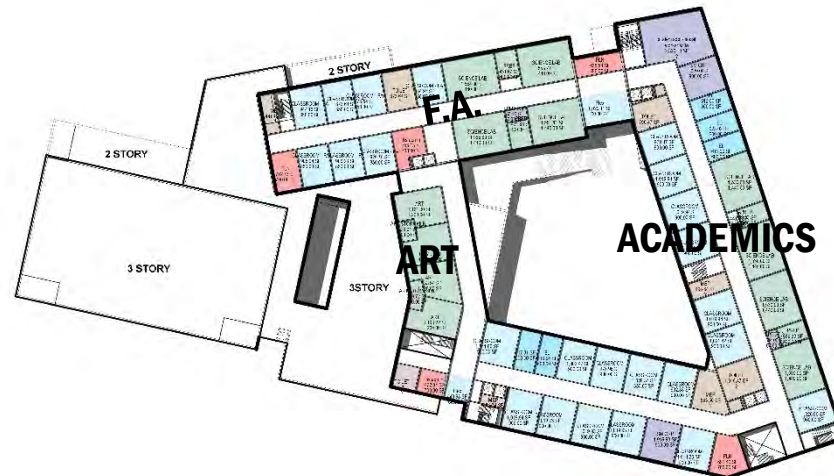
DESIGN OPTIONS- "COURTYARD 4-STORY"



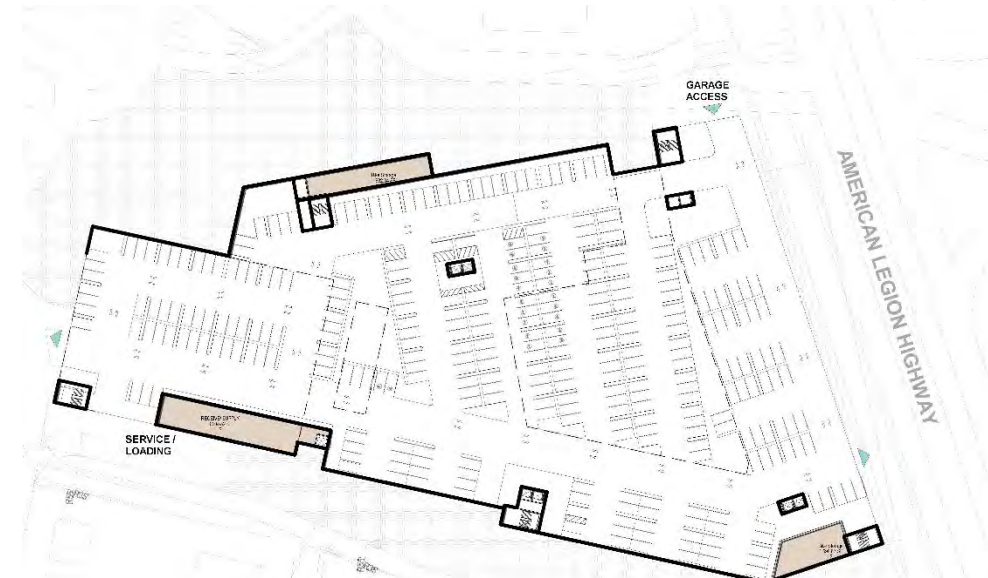
SECOND FLOOR



THIRD FLOOR



FOURTH FLOOR



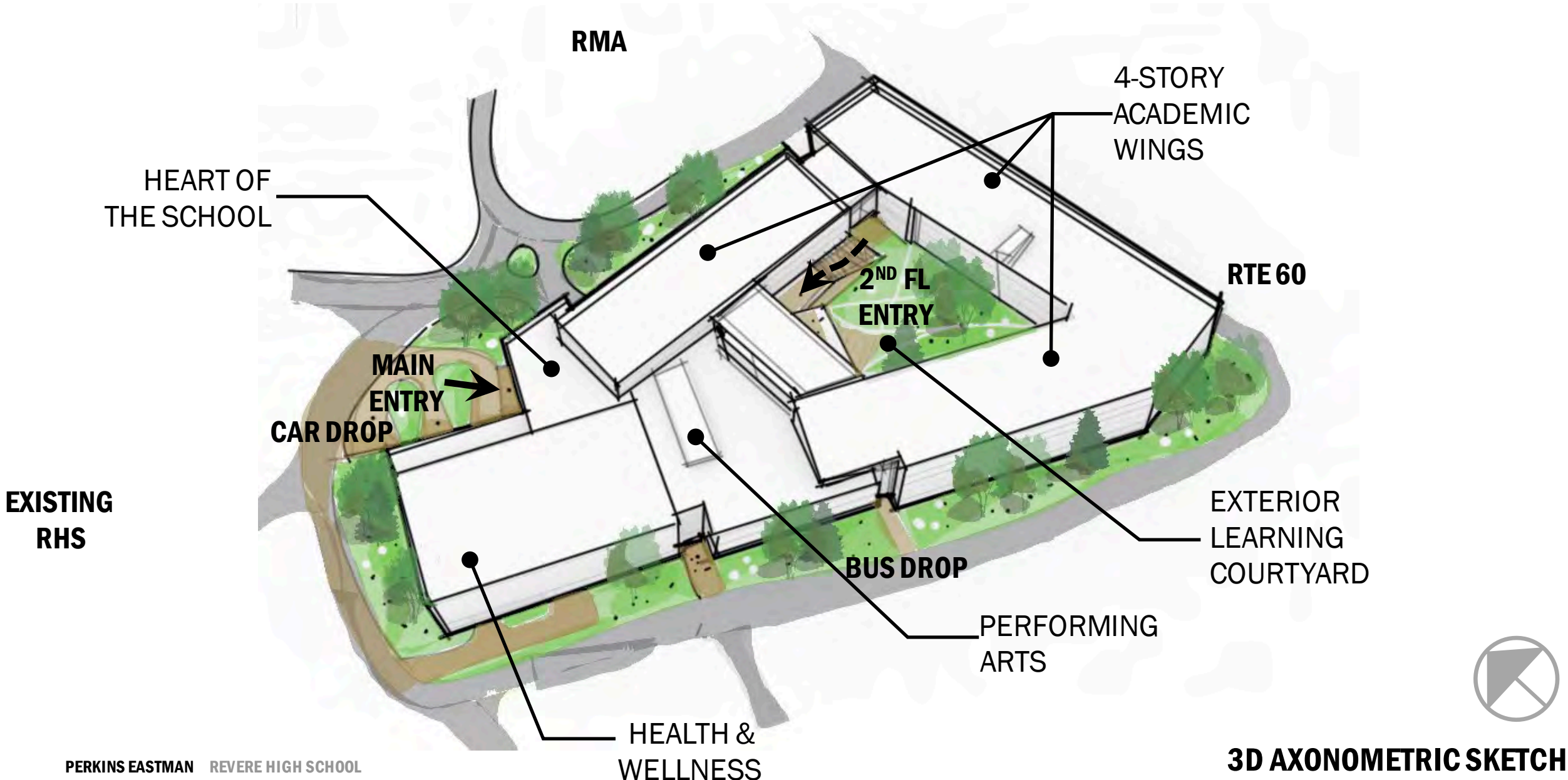
UNDER-BUILDING GARAGE



- GENERAL CLASSROOM
- SPECIAL ED.
- SCI / ART / TECH / MUS
- SHARED (MEDIA/AUD/GYM)
- HEART OF SCH. / CAF
- ADMIN
- SPPT (KITC./CUSTODIAN/TOI.)
- STAIRS

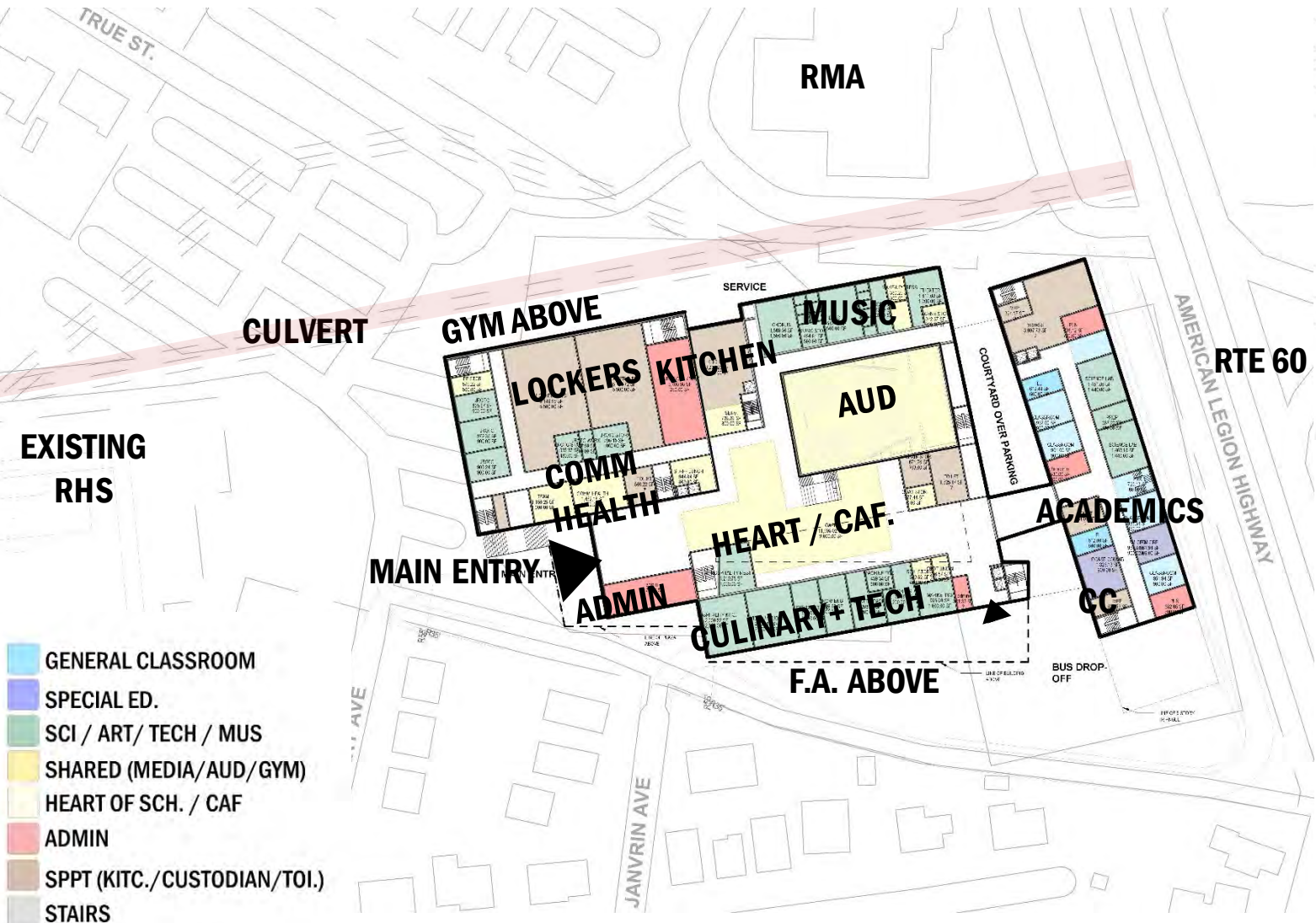
F.A. FRESHMAN ACADEMY

DESIGN OPTIONS- "COURTYARD 4-STORY"



TRIANGLE- 6-STORY

DESIGN OPTIONS- "TRIANGLE- 6-STORY"



- GENERAL CLASSROOM
- SPECIAL ED.
- SCI / ART/ TECH / MUS
- SHARED (MEDIA/AUD/GYM)
- HEART OF SCH. / CAF
- ADMIN
- SPPT (KITC./CUSTODIAN/TOI.)
- STAIRS

F.A. FRESHMAN ACADEMY



FIRST FLOOR PLAN



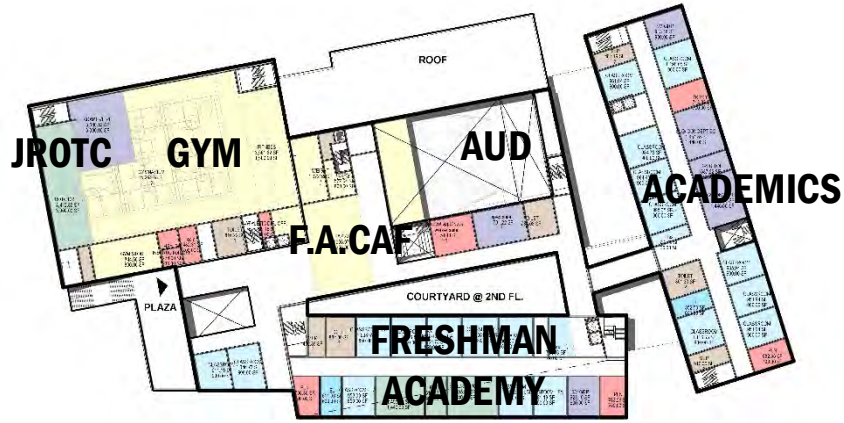
CONTEXT SKETCH

DESIGN CONSIDERATIONS

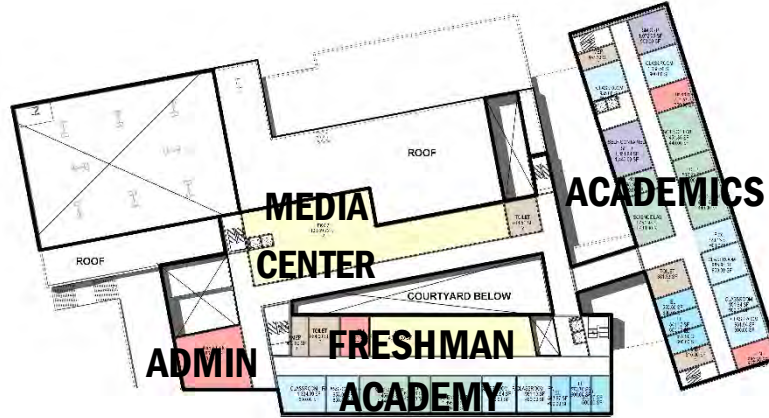
- 4- STORY HEART OF SCHOOL
- 5-STORY FRESHMAN ACADEMY
- 6- STORY GRADE 10-12 ACADEMIC WING
- GYM NEAR FIELDS
- GYM AT SECOND FLOOR
- EXTERIOR LIGHTWELLS FOR DAYLIGHTING
- POSSIBLE COMMUNITY ENTRANCE AT SECOND FLOOR (?)
- GOOD SOLAR @ FRESHMAN ACADEMY
- E/W FACING ACADEMIC WING

DESIGN OPTIONS- "TRIANGLE- 6-STORY"

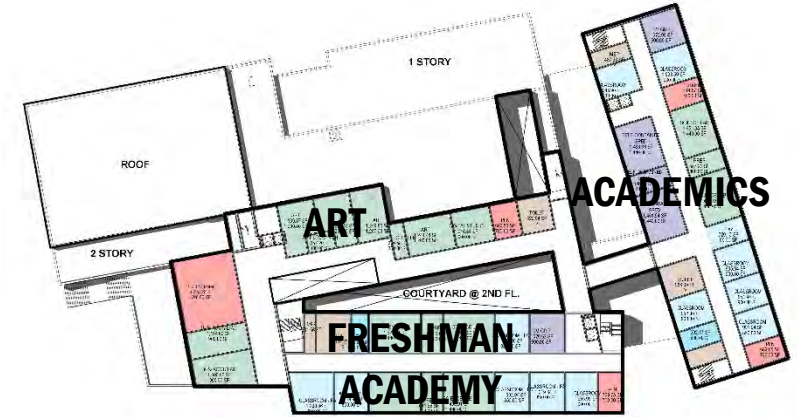
- GENERAL CLASSROOM
- SPECIAL ED.
- SCI / ART / TECH / MUS
- SHARED (MEDIA/AUD/GYM)
- HEART OF SCH. / CAF
- ADMIN
- SPPT (KITC./CUSTODIAN/TOI.)
- STAIRS



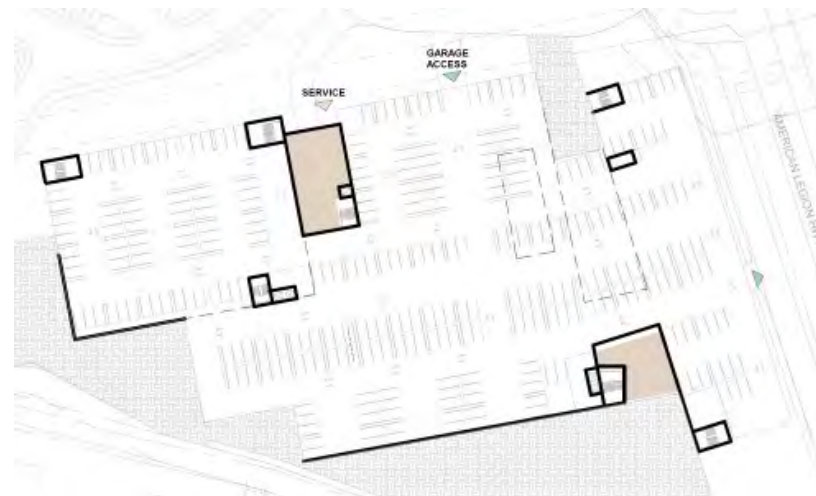
SECOND FLOOR



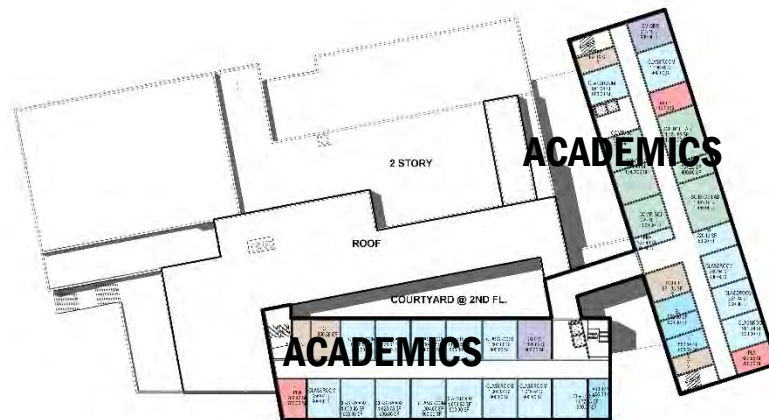
THIRD FLOOR



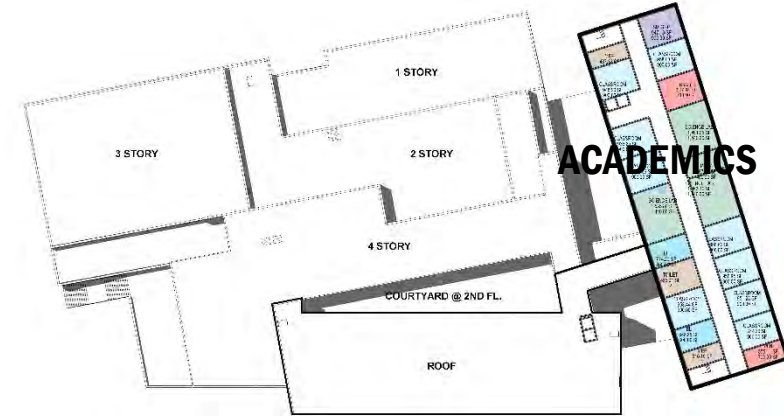
FOURTH FLOOR



UNDER-BUILDING GARAGE

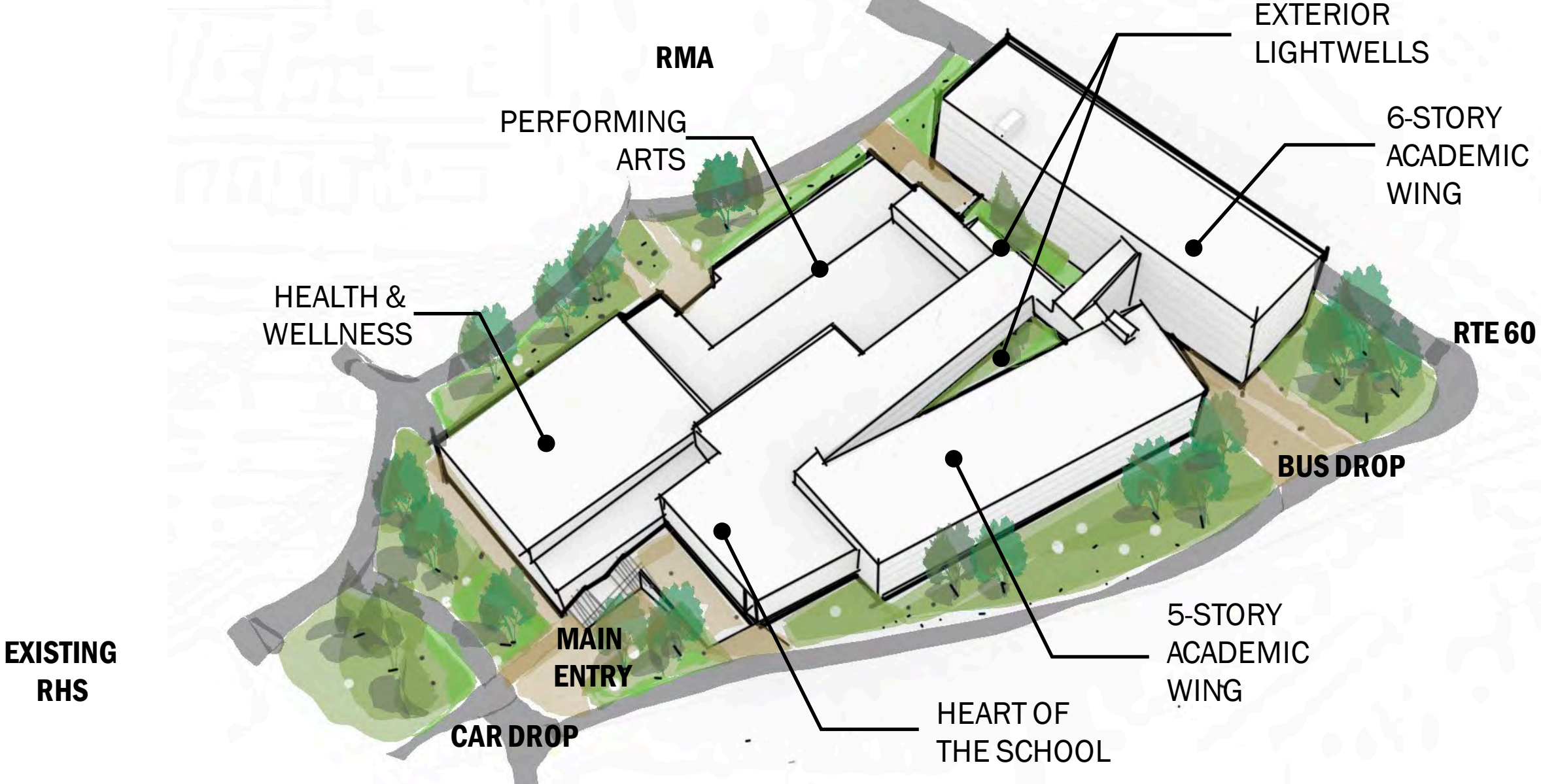


FIFTH FLOOR



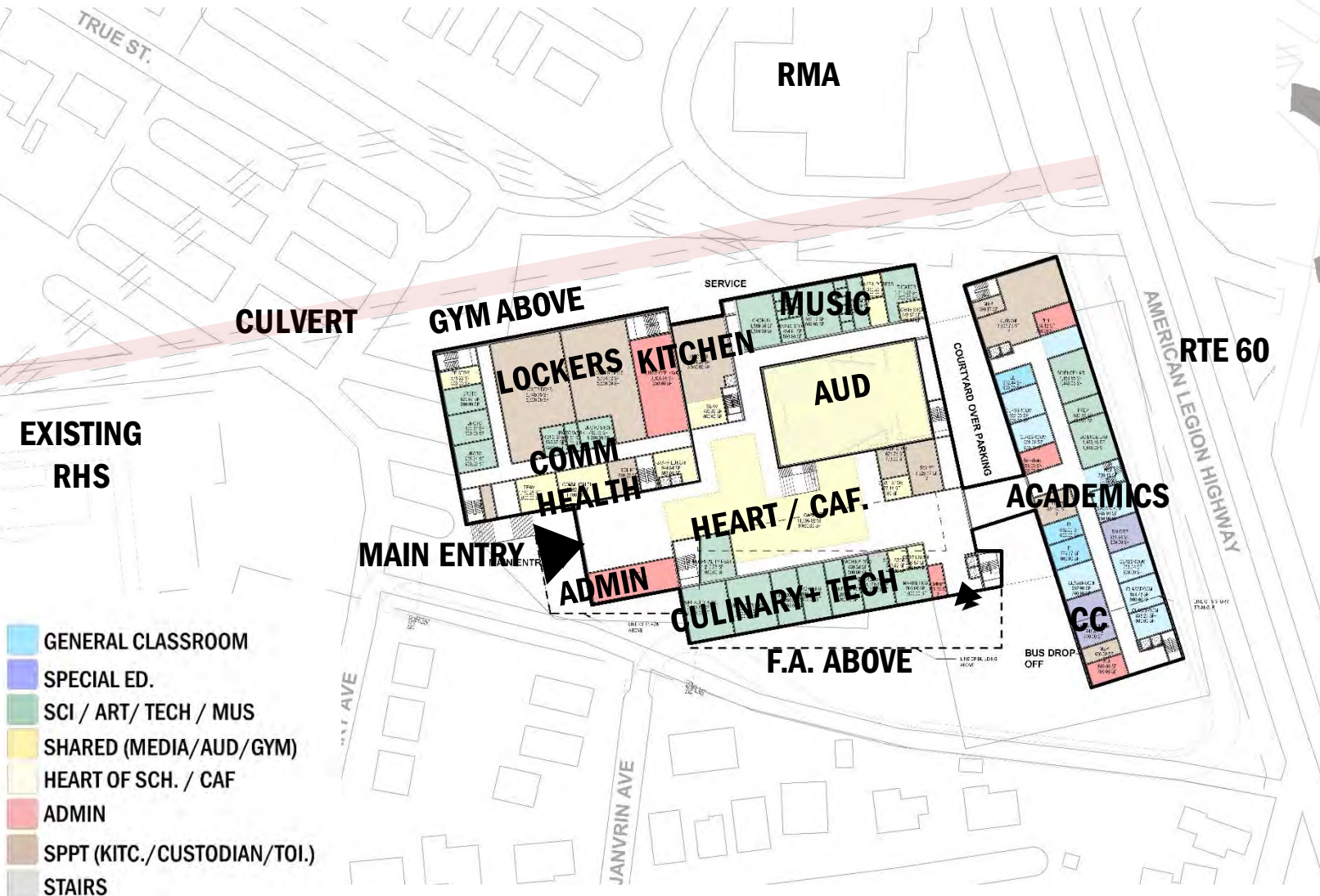
PARTIAL SIXTH FLOOR

DESIGN OPTIONS- "TRIANGLE- 6-STORY"



TRIANGLE- ALT 1- 5-STORY

DESIGN OPTIONS- "TRIANGLE-ALT 1 5-STORY"



CONTEXT SKETCH

DESIGN CONSIDERATIONS

- 4- STORY HEART OF SCHOOL & FRESHMAN ACADEMY
- 5- STORY GRADE 10-12 ACADEMIC WING
- GYM NEAR FIELDS
- GYM AT SECOND FLOOR
- EXTERIOR LIGHTWELLS FOR DAYLIGHTING
- POSSIBLE COMMUNITY ENTRANCE AT SECOND FLOOR (?)
- GOOD SOLAR @ FRESHMAN ACADEMY
- E/W FACING ACADEMIC WING

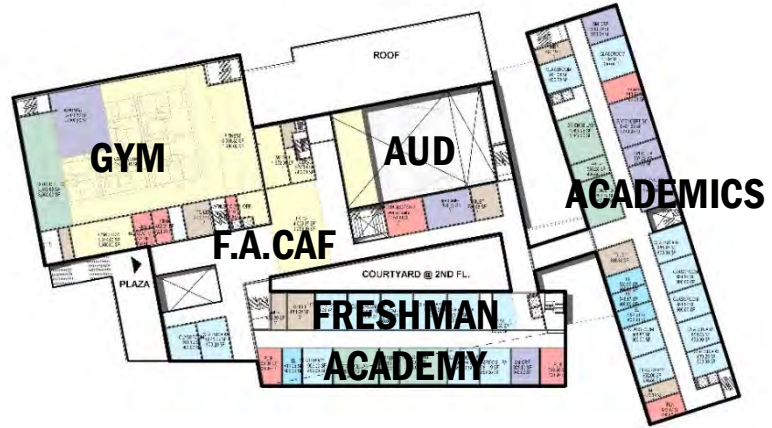
FIRST FLOOR PLAN

F.A. FRESHMAN ACADEMY

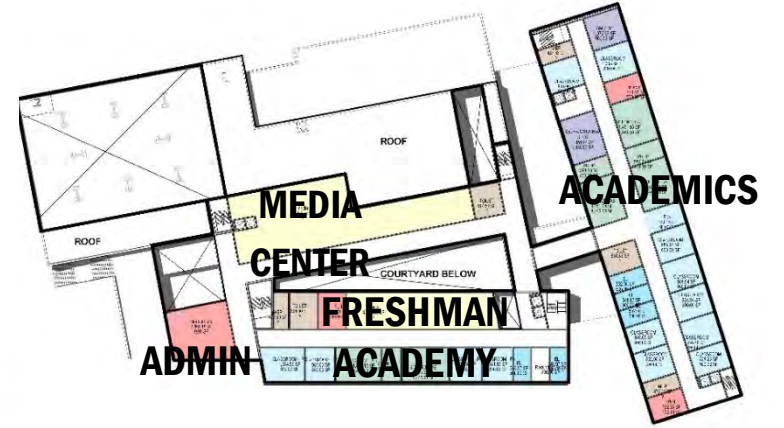
DESIGN OPTIONS- "TRIANGLE-ALT 1 5-STORY"



UNDER-BUILDING GARAGE



SECOND FLOOR

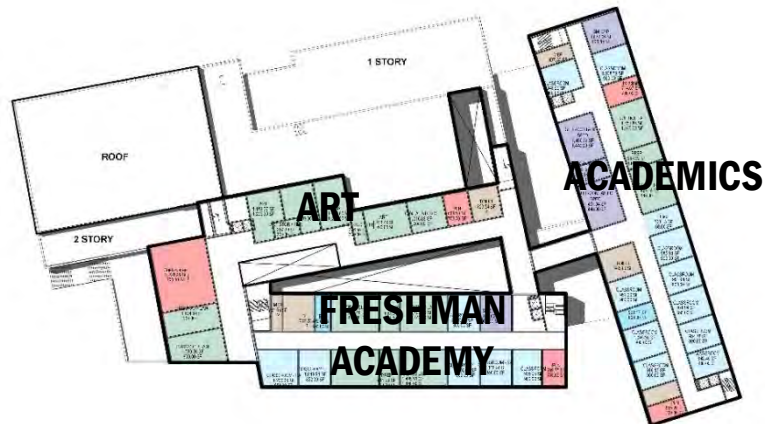


THIRD FLOOR

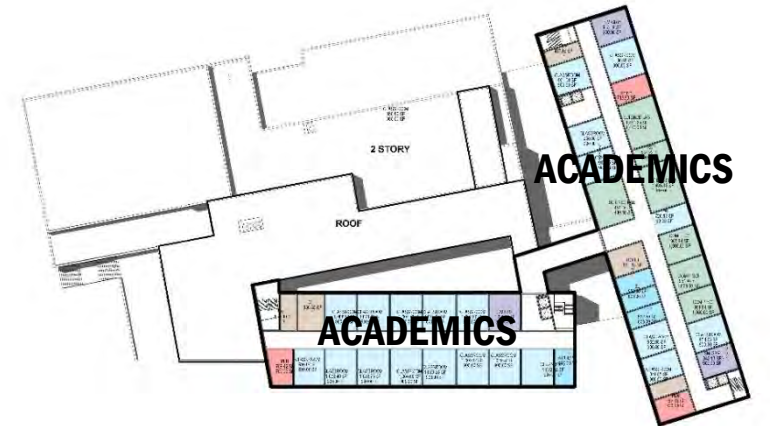


- GENERAL CLASSROOM
- SPECIAL ED.
- SCI / ART/ TECH / MUS
- SHARED (MEDIA/AUD/GYM)
- HEART OF SCH. / CAF
- ADMIN
- SPPT (KITC./CUSTODIAN/TOI.)
- STAIRS

F.A. FRESHMAN ACADEMY

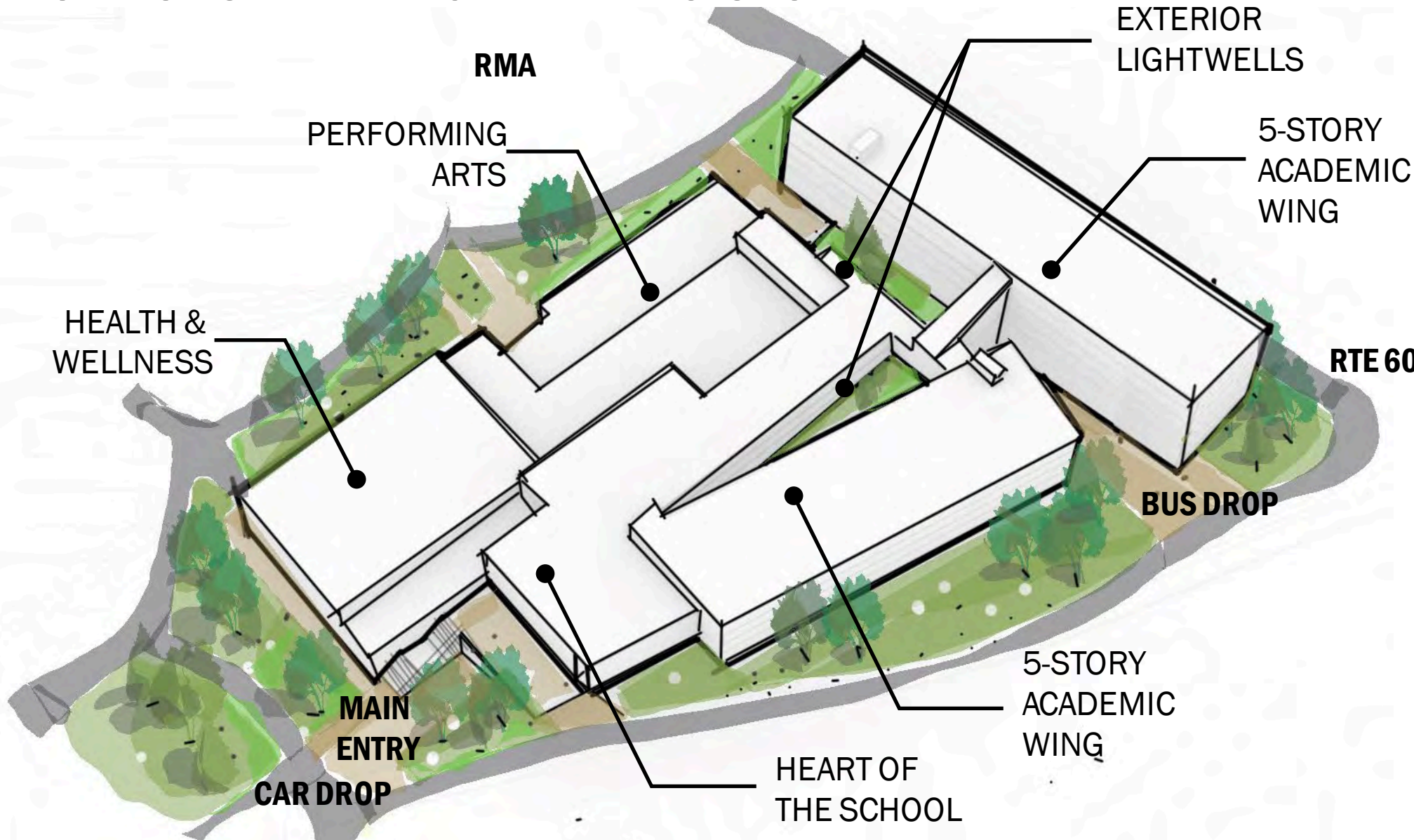


FOURTH FLOOR



FIFTH FLOOR

DESIGN OPTIONS- "TRIANGLE-ALT 1 5-STORY"





SITE DESIGN UPDATE

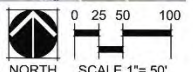
SITE ANALYSIS



LEGEND

- 1** VETERAN'S BASEBALL FIELD
- 2** MULTI-USE SYNTHETIC TURF FIELD
- 3** EXISTING BUILDING
- 4** PARKING LOTS
- 5** ENTRANCE PLAZA
- 6** OUTDOOR LEARNING
- PROPERTY BOUNDRY
- PROPERTY SETBACK
- ←** CAR CIRCULATION
- BUS CIRCULATION
- ▼** BUILDING ENTRY

TOTAL SITE PARKING: 438

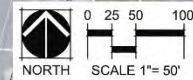


COURTYARD CONCEPT SITE PLAN

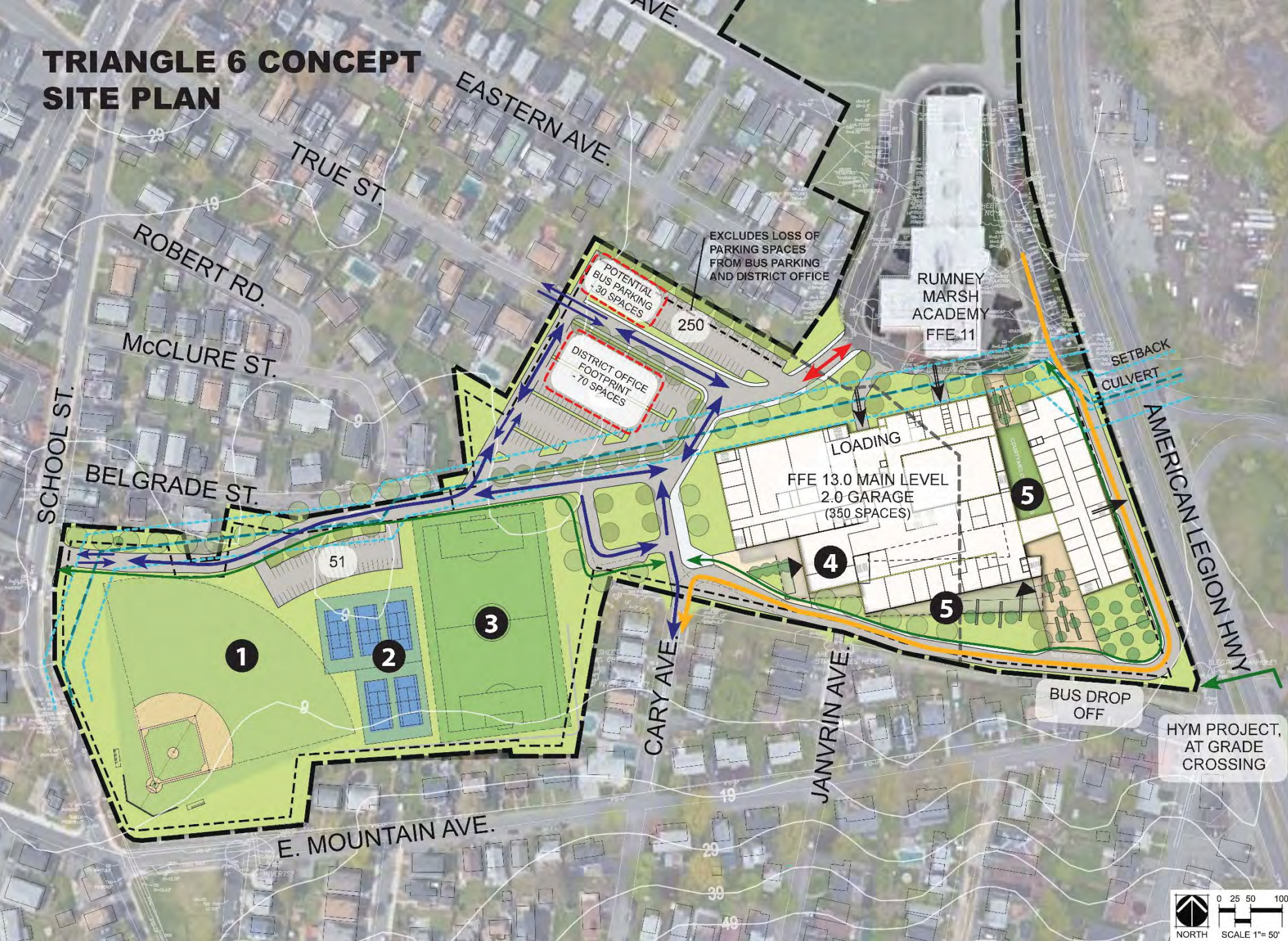


LEGEND

- 1** BASEBALL FIELD
- 2** TENNIS COURTS
- 3** MULTI-USE FIELD
- 4** ENTRANCE PLAZA
- 5** OUTDOOR LEARNING
- PROPERTY BOUNDRY
- PROPERTY SETBACK
- INTERNAL BOUNDARY
- ←** CAR CIRCULATION
- ←** BUS CIRCULATION
- ←** PEDESTRIAN / BIKE LANE
- ←** EMERGENCY ACCESS
- ←** GARAGE AND LOAD DOCK ACCESS
- ▼** BUILDING ENTRY

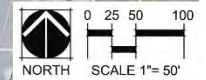


TRIANGLE 6 CONCEPT SITE PLAN

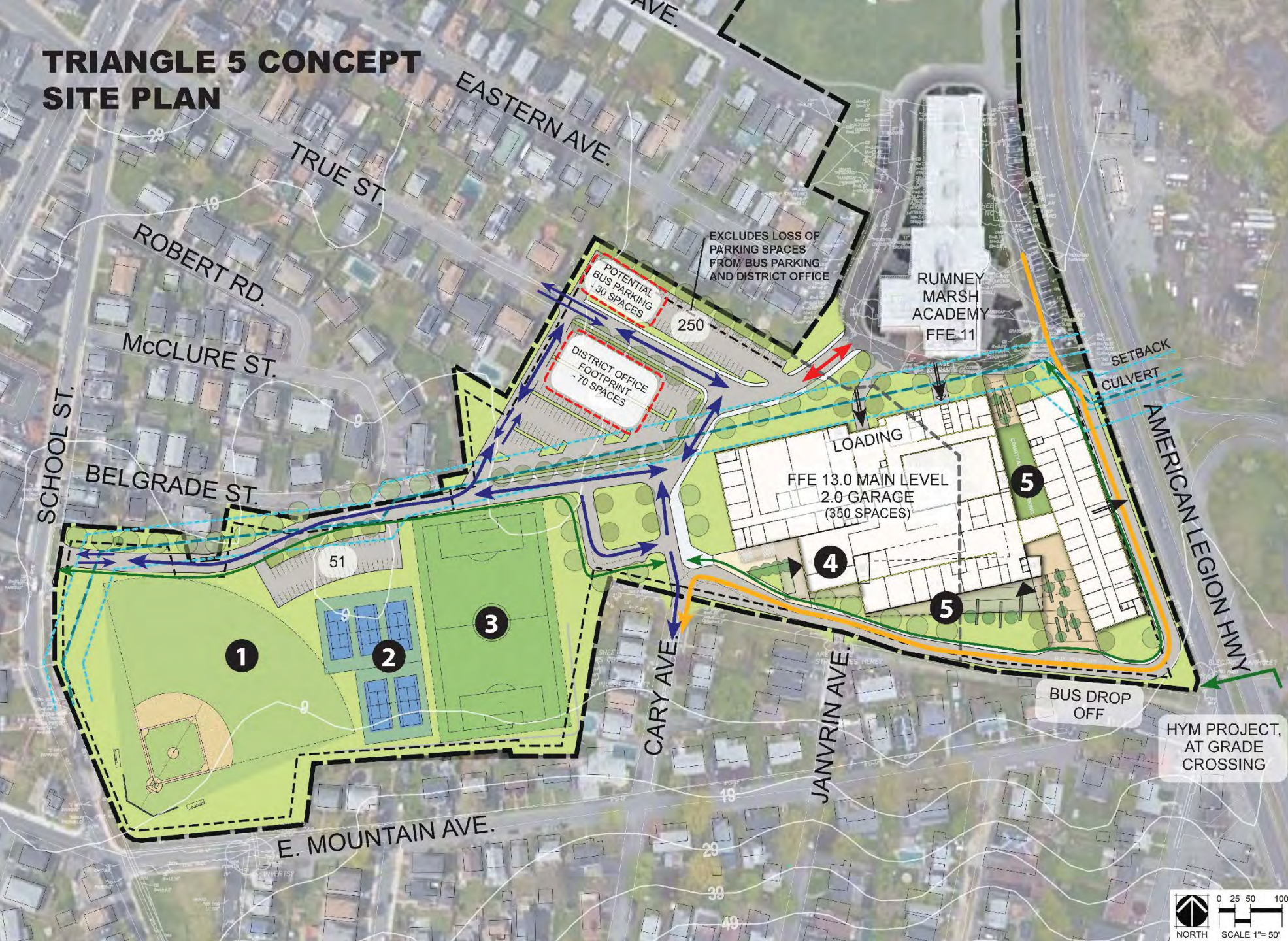


LEGEND

- 1** BASEBALL FIELD
- 2** TENNIS COURTS
- 3** MULTI-USE FIELD
- 4** ENTRANCE PLAZA
- 5** OUTDOOR LEARNING
- PROPERTY BOUNDARY
- PROPERTY SETBACK
- INTERNAL BOUNDARY
- ←** CAR CIRCULATION
- ←** BUS CIRCULATION
- ←** PEDESTRIAN / BIKE LANE
- ←** EMERGENCY ACCESS
- ←** GARAGE AND LOAD DOCK ACCESS
- ▼** BUILDING ENTRY



TRIANGLE 5 CONCEPT SITE PLAN



LEGEND

- 1** BASEBALL FIELD
- 2** TENNIS COURTS
- 3** MULTI-USE FIELD
- 4** ENTRANCE PLAZA
- 5** OUTDOOR LEARNING
- PROPERTY BOUNDARY
- PROPERTY SETBACK
- INTERNAL BOUNDARY
- ←** CAR CIRCULATION
- ←** BUS CIRCULATION
- ←** PEDESTRIAN / BIKE LANE
- ←** EMERGENCY ACCESS
- ←** GARAGE AND LOAD DOCK ACCESS
- ▼** BUILDING ENTRY

COURTYARD CONCEPT SITE PLAN

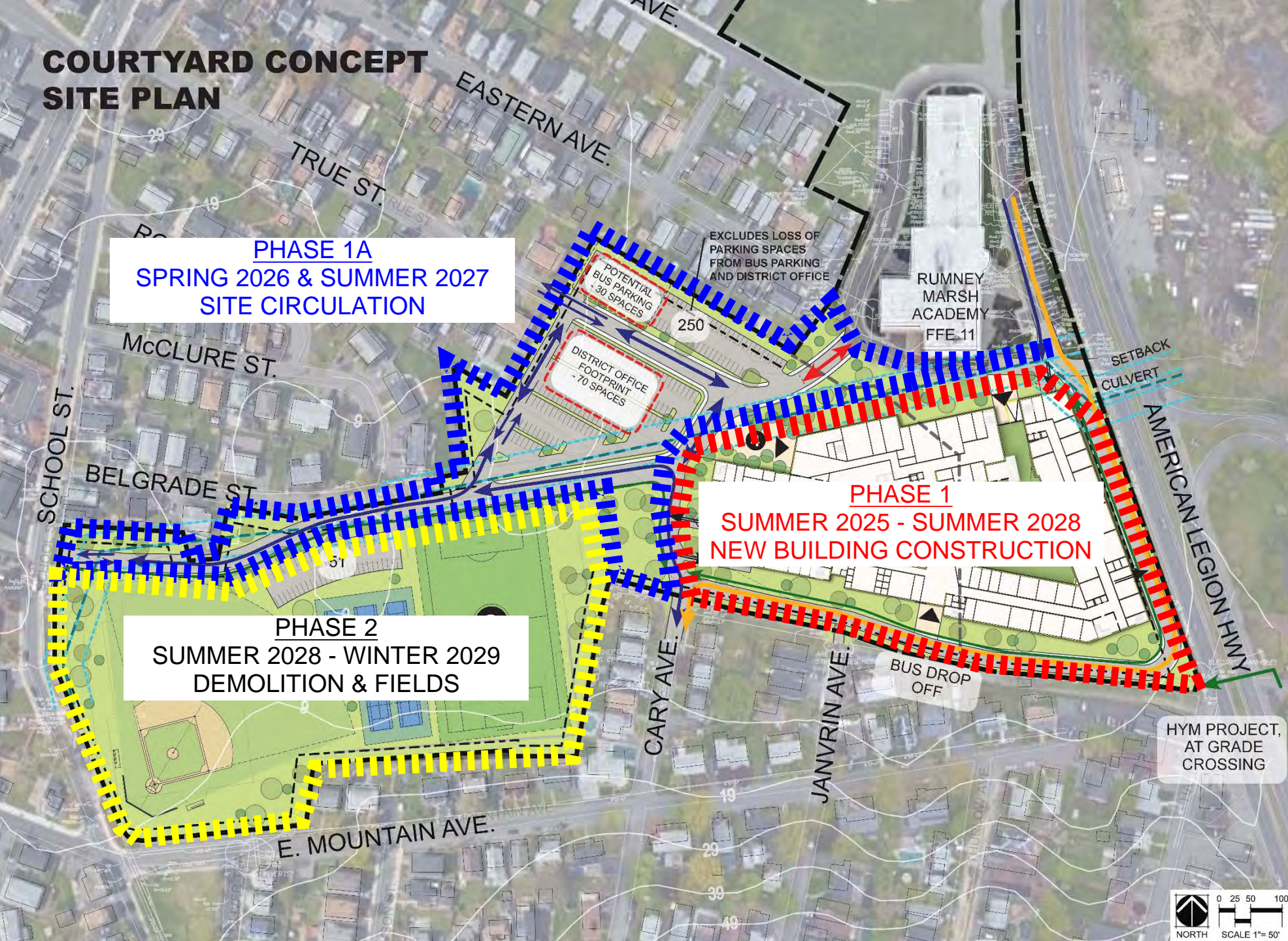
LEGEND

- 1** BASEBALL FIELD
- 2** TENNIS COURTS
- 3** MULTI-USE FIELD
- 4** ENTRANCE PLAZA
- 5** OUTDOOR LEARNING
- PROPERTY BOUNDRY
- - -** PROPERTY SETBACK
- - -** INTERNAL BOUNDARY
- ←** CAR CIRCULATION
- BUS CIRCULATION
- PEDESTRIAN / BIKE LANE
- EMERGENCY ACCESS
- GARAGE AND LOAD DOCK ACCESS
- ▼** BUILDING ENTRY

PHASE 1A
SPRING 2026 & SUMMER 2027
SITE CIRCULATION

PHASE 1
SUMMER 2025 - SUMMER 2028
NEW BUILDING CONSTRUCTION

PHASE 2
SUMMER 2028 - WINTER 2029
DEMOLITION & FIELDS



HYM PROJECT,
 AT GRADE
 CROSSING

