

REVERE BOATHOUSE

FEASIBILITY STUDY

REVERE, MA

MCALLISTER
MARINE
ENGINEERING



ARROWSTREET

PREPARED FOR
CITY OF REVERE



ABOVE view from Thayer Ave



ABOVE view from Pines River shoreline.



BELOW view from yard.

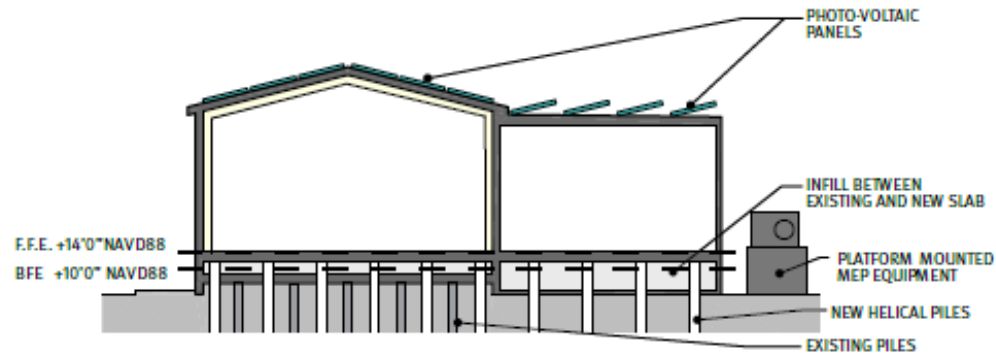
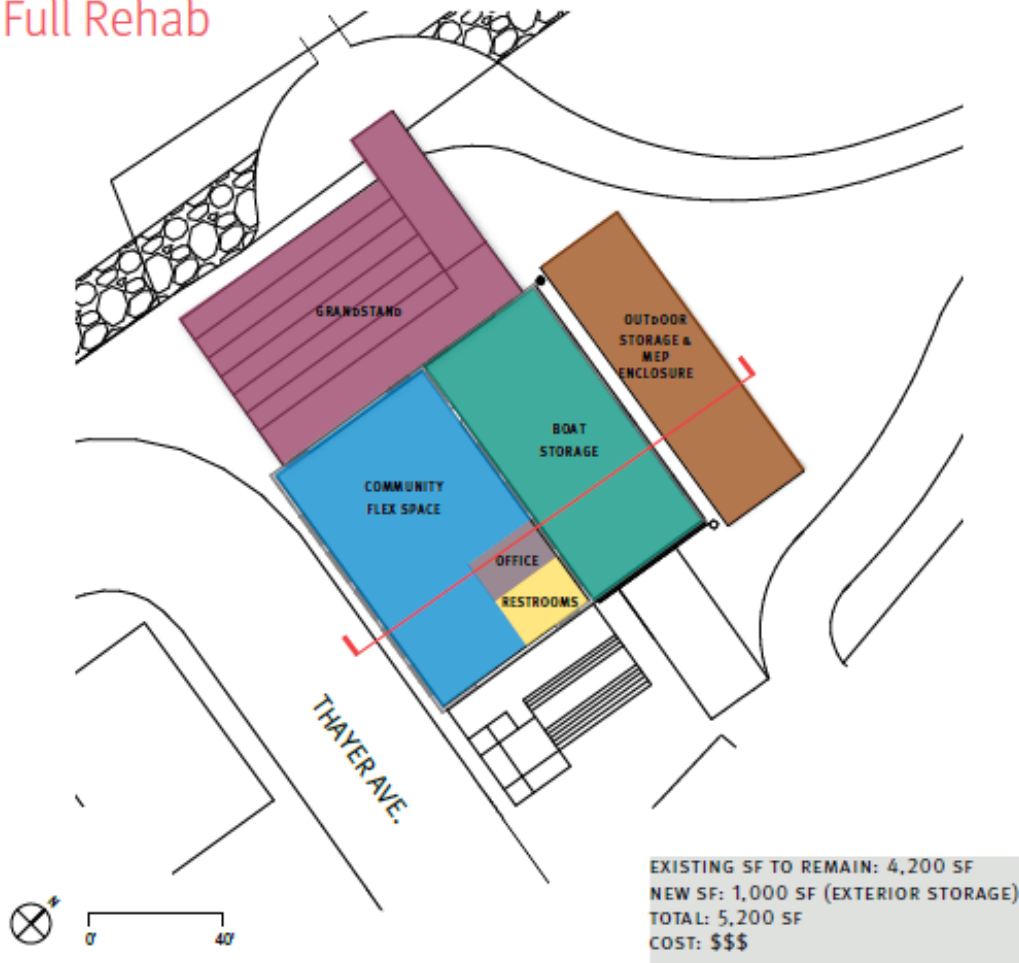


BELOW view from Gibson Park.

Existing Building



Full Rehab



Building Options

- Full Rehab
- Partial Rehab
- New Construction

Proposed Program

Storage Area – 1,800 -2,400 sf

- Sculls
- Stand-Up Paddleboards
- Kayaks

Community Meeting Space – 600 sf

- 30-40 people

Public Restrooms

Classroom – 225 sf

- 10-15 people

Gym -600 sf

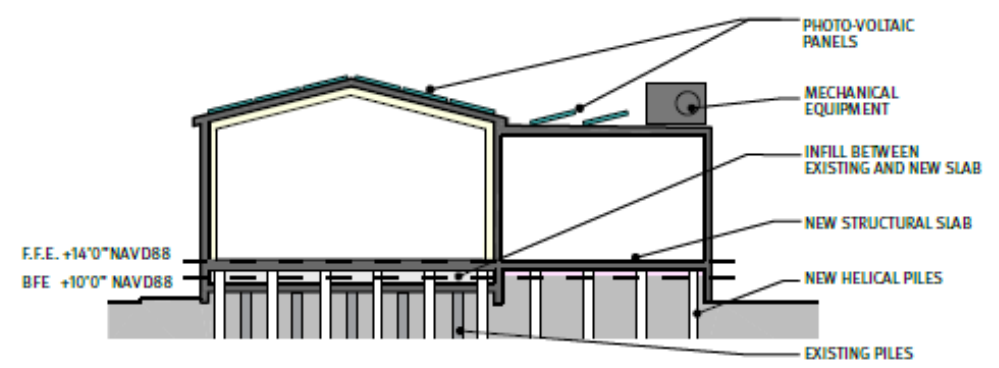
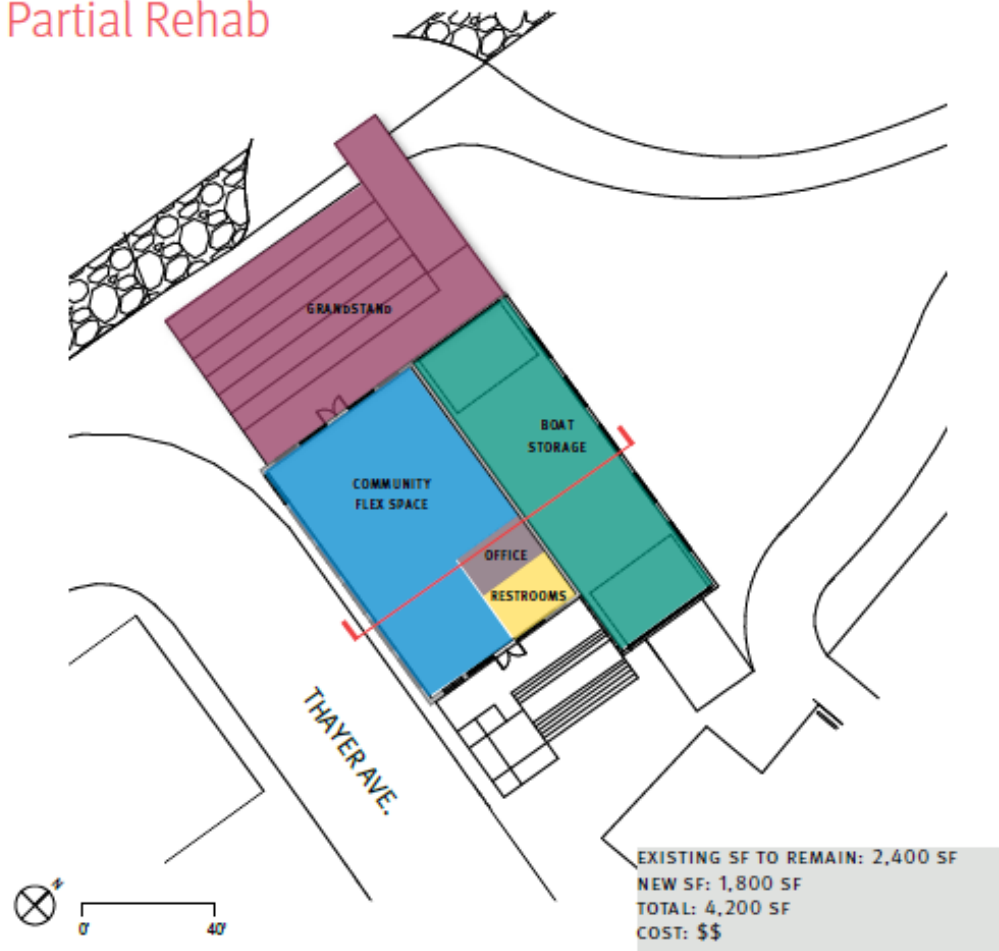
- 6 Rowing Machines
- Weight Racks

Locker Rooms -200 sf/ea

Support Spaces - 50-100 sf/ea

- Directors Office
- Janitor's Room
- Electrical and Mechanical Rooms
- Outdoor Storage – 1,000 sf

Partial Rehab



Building Options

- Full Rehab
- Partial Rehab
- New Construction

Proposed Program

Storage Area – 1,800 -2,400 sf

- Sculls
- Stand-Up Paddleboards
- Kayaks

Community Meeting Space – 600 sf

- 30-40 people

Public Restrooms

Classroom – 225 sf

- 10-15 people

Gym -600 sf

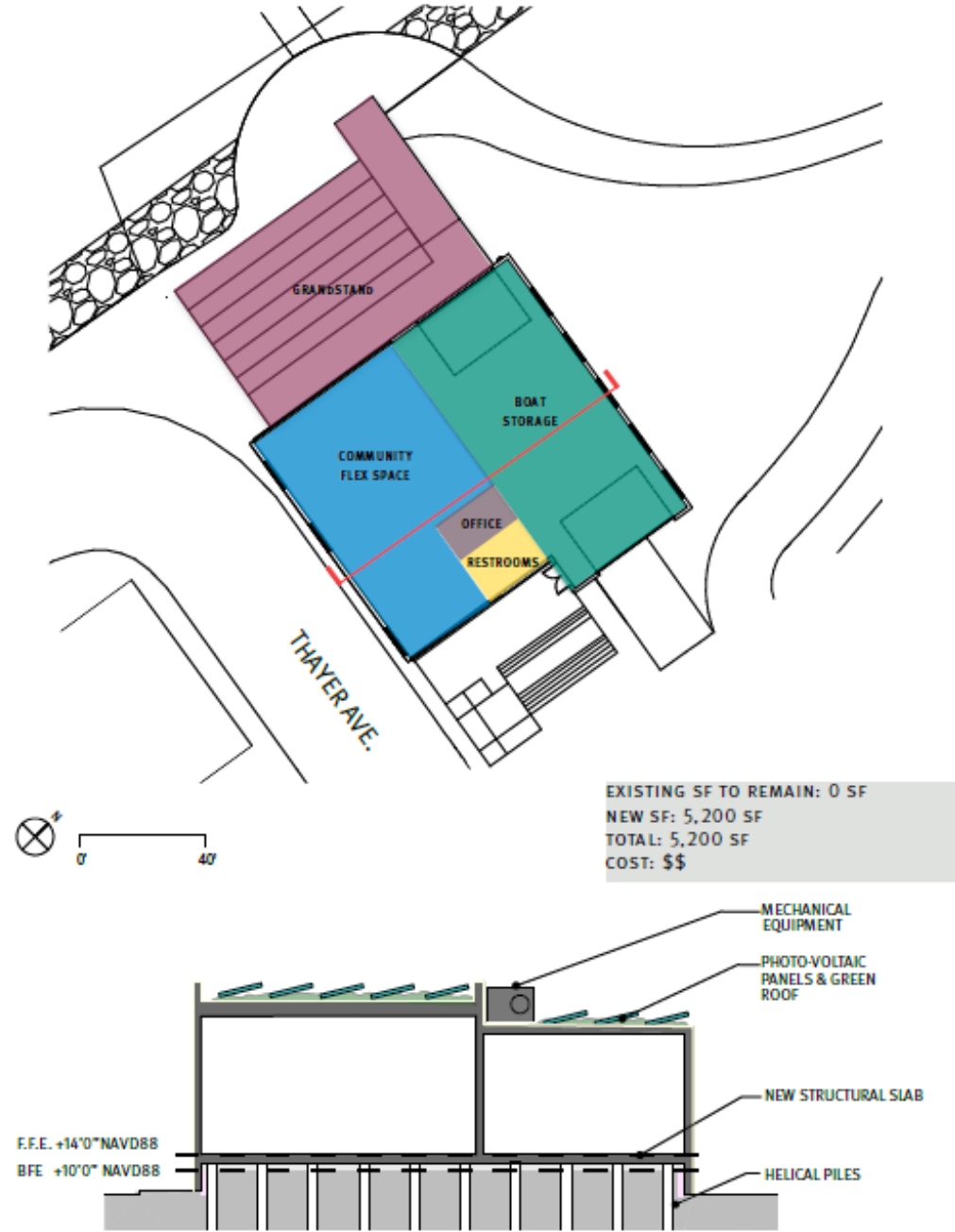
- 6 Rowing Machines
- Weight Racks

Locker Rooms -200 sf/ea

Support Spaces - 50-100 sf/ea

- Directors Office
- Janitor's Room
- Electrical and Mechanical Rooms
- Outdoor Storage – 1,000 sf

New Construction



Building Options

- Full Rehab
- Partial Rehab
- **New Construction**

Proposed Program

- Storage Area – 1,800 -2,400 sf
 - Sculls
 - Stand-Up Paddleboards
 - Kayaks
- Community Meeting Space – 600 sf
 - 30-40 people
- Public Restrooms
- Classroom – 225 sf
 - 10-15 people
- Gym -600 sf
 - 6 Rowing Machines
 - Weight Racks
- Locker Rooms -200 sf/ea
- Support Spaces - 50-100 sf/ea
 - Directors Office
 - Janitor's Room
 - Electrical and Mechanical Rooms
 - Outdoor Storage – 1,000 sf

PROPOSED SITE PLAN - CURRENT ACCESS

Direct access to parking and Boathouse from Thayer Ave.



- | | | | |
|----------------------------|------------------------------|--------------------------------|--|
| A Floating Dock | F Outdoor Storage | K Rain Garden | P Community Garden |
| B Revetment | G Lobster Pots | L Trailer Parking | Q New Tennis Courts (2) |
| C Riverside Seawall | H Winter Dock Storage | M Existing Parking (36) | R Multi-Purpose Field (210'x360') |
| D Grandstand | I Gate Access | N Vehicular Entry | S Existing Tennis Courts |
| E Community Boating | J New Parking (12) | O Existing Playground | |

Site Development Options

- Current Access
- Future Access

PROPOSED SITE PLAN - FUTURE ACCESS

Access to parking and Boathouse from proposed roundabout.



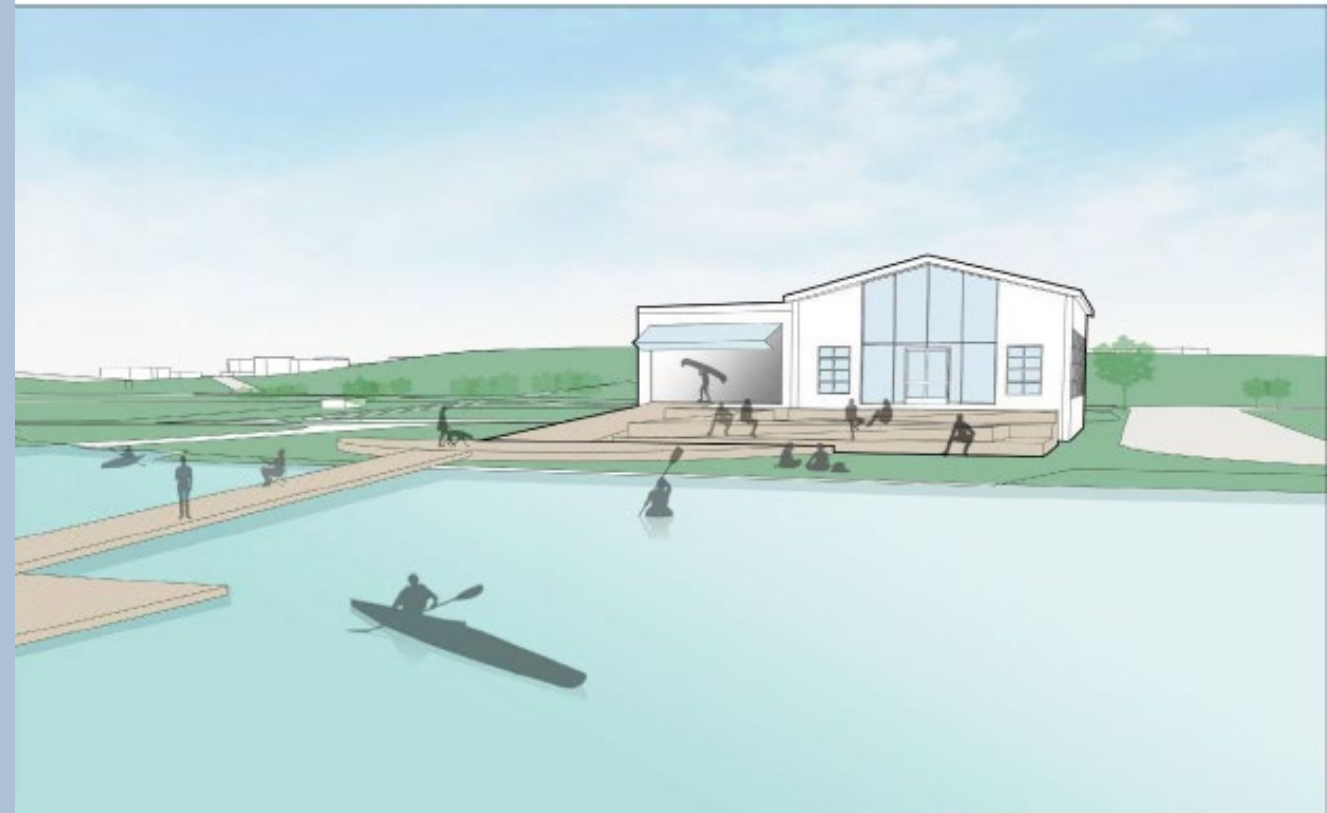
- | | | | |
|----------------------------|------------------------------|--------------------------------|--|
| A Floating Dock | F Outdoor Storage | K Rain Garden | P Community Garden |
| B Revetment | G Lobster Pots | L Trailer Parking | Q New Tennis Courts (2) |
| C Riverside Seawall | H Winter Dock Storage | M Existing Parking (36) | R Multi-Purpose Field (210'x360') |
| D Grandstand | I Gate Access | N Vehicular Entry | S Existing Tennis Courts |
| E Community Boating | J New Parking (12) | O Existing Playground | |

Site Development Options

- Current Access
- Future Access

Recommendation

- Partial Building Rehab
- Site improvements with resiliency features



ABOVE Conceptual section through floating dock, ramps and building