



# The City of Revere Massachusetts

## Inflow Removal Project 9A



Maps data Google ©2023

**Construction  
Restarted  
June  
2024**



## Project Overview

### The City of Revere Inflow Removal Project 9A

The Engineering Department and Department of Public Works identified the need to improve sewer and storm water infrastructure in locations throughout the City of Revere (City) to aid in the overarching removal of “clean” water inflow into the City’s Sanitary Sewer System. The goal of this project is to redirect existing public and private inflow sources discharging into the sewer. These sources include but are not limited to sump pumps, roof drains, roof leaders, driveway drains and yard drains. These sources collect “clean” water and are in violation of The Clean Water Act when discharging to the sanitary sewer. Additionally, this project includes installation of new storm water infrastructure on several streets.

**Construction initiated August 2023  
Restarted June 2024**

### Benefits of Inflow Removal

Removing clean water inflow from the sanitary sewer systems has many benefits to the City, homeowners, and the environment, including:

- Reduced risk of wastewater backups into private residences
- Reduced risk of wastewater discharging to critically sensitive areas—such as wetlands
- Reduced wastewater treatment costs associated with unnecessary treatment of “clean” water



▲ Example of a drainage manhole that will be installed.

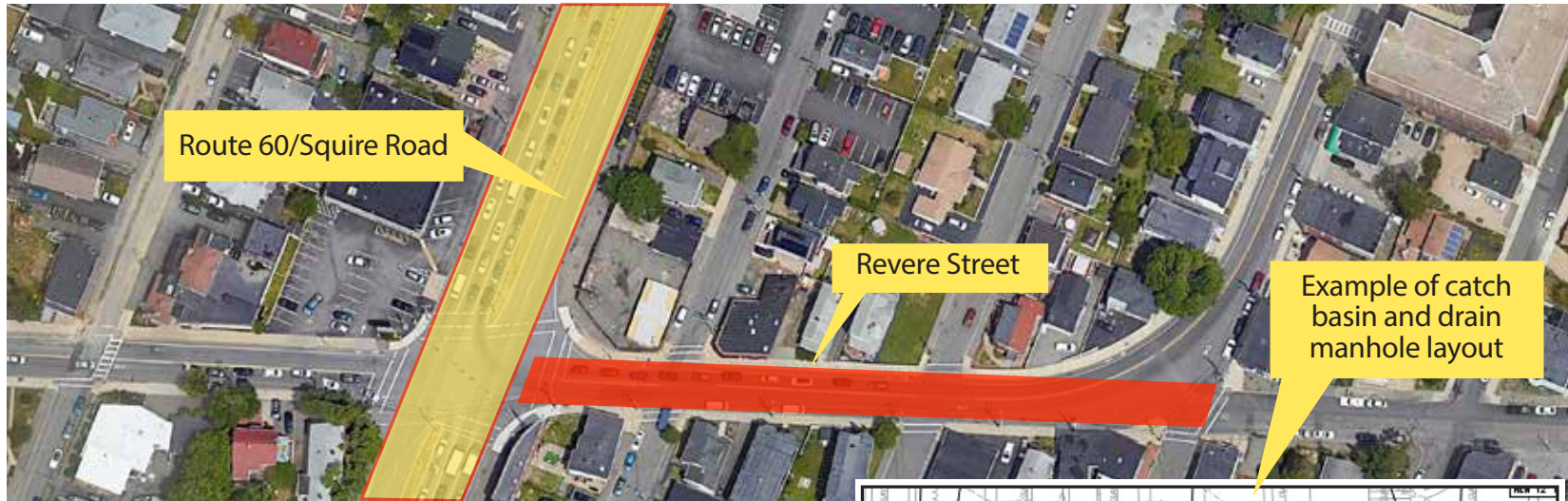
Schedule		
Year	Month	Phase
2022	JAN – DEC	Design
	JAN – APR	Design
2023	MAY – JUL	Construction Bidding
	AUG – OCT	Construction Begins August 2023
	NOV – DEC	Winter Work Shutdown
2024	JAN – MAY	Winter Work Shutdown
	JUN – OCT	Construction Ongoing
	NOV – DEC	Winter Work Shutdown
2025	JAN – APR	Winter Work Shutdown
	MAY – JUN	Final Paving (schedule to be determined)
	JULY	Project Complete

Excavation work will be suspended from November 2023 through April 2024 and November 2024 to April of 2025. Final paving will be completed during the spring of 2025 in a consecutive 30-day period. Completion will be no later than June 30th.

## Questions?

For questions related to this project, contact:  
Nicholas Rystrom, PE, City Engineer  
781-286-8152

# Location of Project Work and Summary of Improvements (Example)



Map data Google ©2023



## Inflow project 9A includes, but is not necessarily limited to:

- Installation of approximately:
  - 1,600 linear feet (LF) of new 12- to 18-inch PVC and ductile iron drain pipe
  - 27 new drain manholes
  - 25 new catch basins
- Redirection of 55 private property inflow sources such as roof drains, roof leaders and sump pumps



Roof leader ▶



▲ Sump pump



◀ Roof drain

## New Drainage and Paving Details

Location	Drainage (LF)	Manholes	Catch Basins	Permanent Trench Paving	Full-width Mill & Overlay Paving
Argyle Street	35	0	1	✓	
Fernwood Avenue	415	3	4		✓
Revere Street	400	5	6		✓
School Street	150	3	2	✓	
Shurtleff Street	170	2	3	✓	
Walnut Place	135	1	3	✓	

JULY 2024

## Brochure translations:



## City of Revere

**Patrick M. Keefe, Jr.**  
Mayor

**Christopher Ciaramella**  
Superintendent of  
Public Works

**Nicholas Rystrom, PE**  
City Engineer



**Robert O. Button**, Officer-in-Charge

**John T. Doherty, PE**, Project Director

**Hannah Sullivan, PE**, Project Engineer