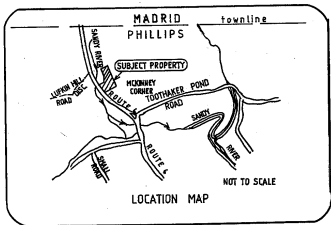
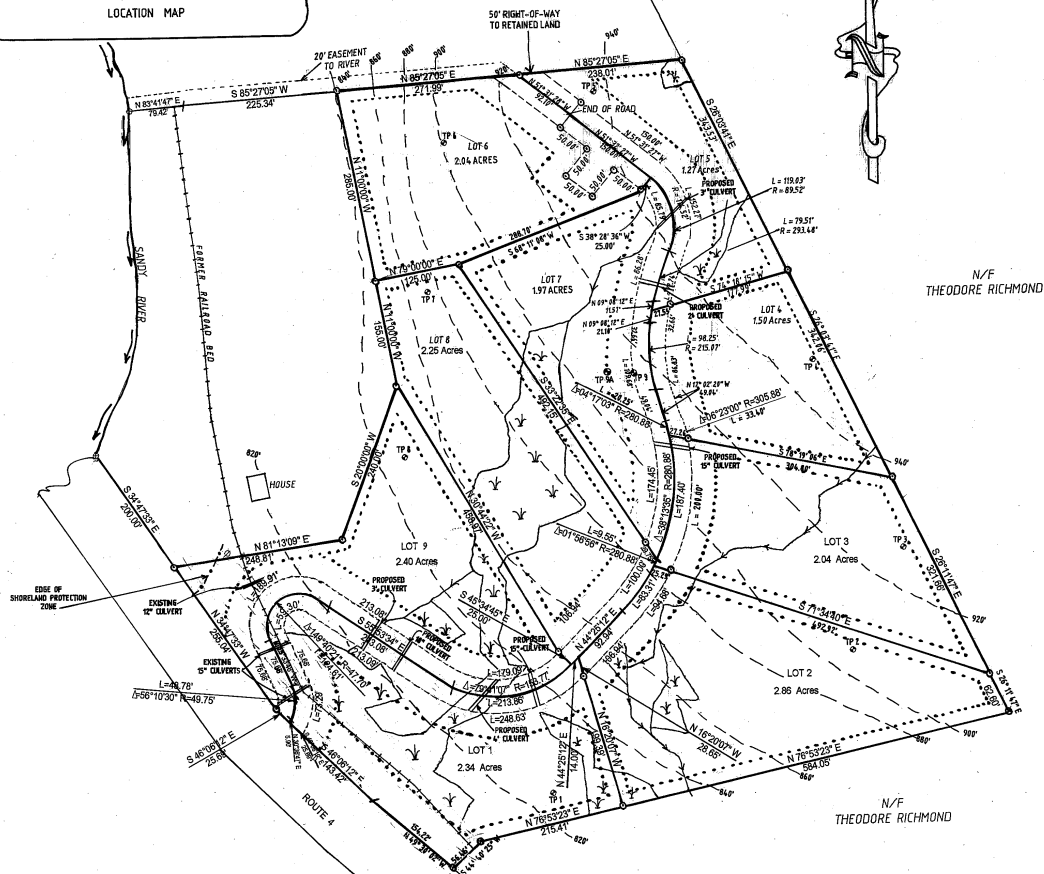


Notes

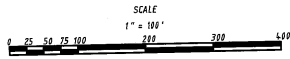
- 1) OWNERS OF RECORD: HANS W. & ROSEMARIE V. JENAU
DEED REFERENCE: BK. 2154 PG. 323 & BK. 2331 PG. 313 OF THE FRANKLIN COUNTY REGISTRY OF DEEDS.
- 2) CONTOURS ARE TAKEN FROM U.S.G.S. TOPOGRAPHIC SHEET, MADRID QUADRANGLE, PROVISIONAL EDITION 1944.
CONTOUR INTERVALS - 2'



LAND RETAINED BY
HANS W. JENAU &
ROSEMARIE V. JENAU



- Legend
- 1/2 INCH CAPPED REBAR TO BE SET
 - TEST PIT
 - 5/8 INCH REBAR
 - UTILITY PILE
 - X WETLAND
 - - - - - CONTOUR LINES
 - BUILDING SETBACKS
COMBINED 34' SIDELINE, BACKLINE - 20', FRONT LINE - 6' FROM CENTERLINE
 - X ANGLE POINT



APPROVED BY THE TOWN OF PHILLIPS
PLANNING BOARD

Elaine Shiffert
John Allen

Barry J. Basso
Sylvia A. Adams

DATE: 9 October 2006

Franklin County Registry of Deeds
RECEIVED Oct 17 2006
AT 8:51am AND RECORDED AS
PLAN # 4730
ATTEST: Susan O. Black
REGISTER

FINAL
SUBDIVISION PLAN
OF
MOOSELEY RIDGE
FOR
HANS W. & ROSEMARIE V. JENAU
DEVELOPERS
MAILING ADDRESS: 1766 LITTLETON CT, WINTER SPRINGS, FL 32784
ROUTE 4
PHILLIPS • FRANKLIN COUNTY • MAINE
PREPARED BY
ACME ENGINEERING & DESIGN, INC.
116 RAMSDELL ROAD, NEW VINEYARD, MAINE 04856
APPROVED BY: Randy C. Collins DATE: July 10, 2006

SEAL