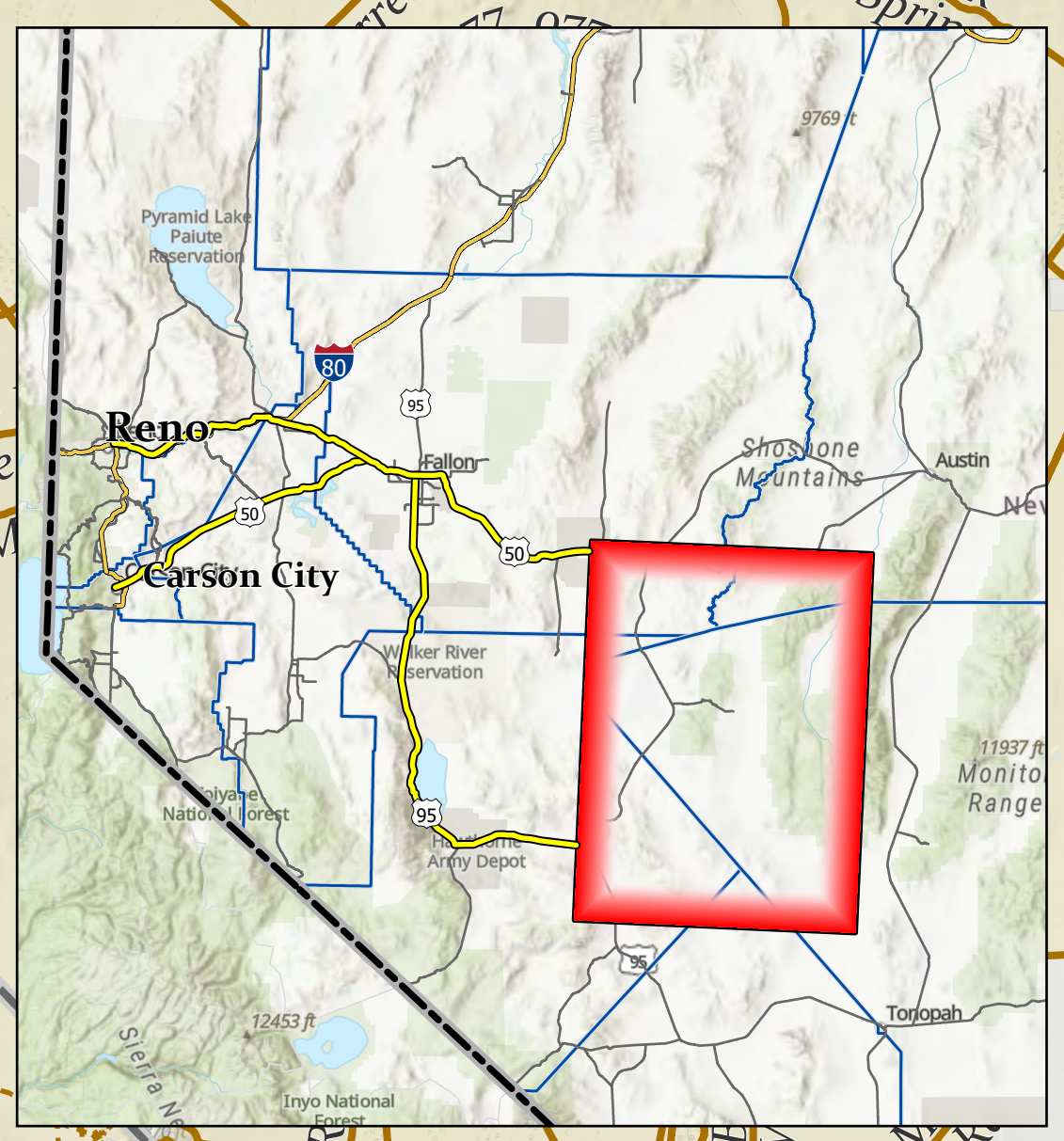


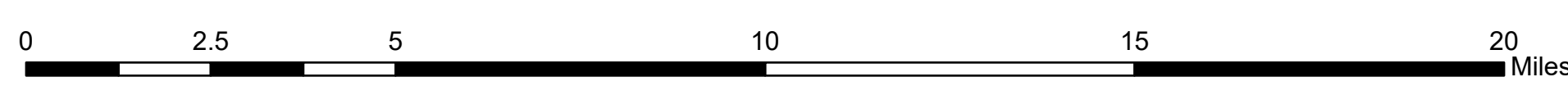
Disclaimer: The Bureau of Land Management has not completed Travel and Transportation planning for this area. The undesignated roads and trails shown on this map are informational only and are subject to change. This map implies no right of access across any private lands displayed on this map. Please follow Responsible Recreation guidelines and stay on existing roads and trails.



- Legend**
- Named OHV Roads and Trails
 - Unimproved Roads and Trails
 - Highways
 - State Route, licenced vehicles only
 - County Boundaries
 - Wilderness Area
 - Bureau of Indian Affairs
 - Bureau of Land Management
 - Department of Defense
 - Forest Service
 - Private
 - Parking
 - Improved Campground
 - Unimproved Campsite

OHV TRAILS

Northwest Nye County, NV



The Nevada Off-Highway Vehicle maps are intended as a navigation tool for Trail Users as they plan their journey. The Department makes no warranties, either expressed or implied, and assumes no responsibility for the accuracy of the data presented on the maps. The Trail user assumes the entire responsibility and risk as to the use of any or all information presented on the map.

© 2015 National Map Accuracy Program (NMAP), Sources: Esri, Aerial DS, USGS, NGA, NASA, CIGAR, N. Robinson, NCEAS, NCS, OS, NMA, Goodatanytime, Brijowatstark, GSA, Geonames, FEMA, Intermap and the GIS user community, Sources: Esri, HERE, Garmin, FAO, NOAA, USGS, © OpenStreetMap contributors, and the GIS User Community