



RSU 9 Community News February 2021



Welcome Interim Superintendent Monique Poulin

Monique Poulin started with RSU 9 in 1999 and has worked as an assistant principal and athletic director at Mt. Blue Middle School, assistant principal, and principal at Mt. Blue High School, and is now our interim superintendent for the next six months. You can read Superintendent Poulin's full letter to the RSU 9 Community [here](#).



Snow Days

- Snow Days will stay as traditional snow days for all (including Remote Learning Academy). We will review the possibility of implementing remote learning days if we begin to approach five snow days. If we have a delayed start as a district, this applies to all (hybrid and Remote Learning Academy). Please access food storm packs if school is canceled.

Community Resources

- ★ A list of area resources can be found on the Mt. Blue RSD site under [Quick Links; Resources for Parents](#)
- ★ The [Franklin County Children's Task Force](#) offers many services and training opportunities for Parents and Caregivers.
- ★ The [United Way](#) of the Tri-Valley Area strives to unite people and resources to improve lives and build a strong and healthy community.
- ★ Regularly updated Community Resources regarding [COVID 19](#)
- ★ [NAMI MAINE](#): Looking for some extra support but don't know where to start. Try the toll-free Helpline (1-800-464-5767).
- ★ Nominate an outstanding teacher to be selected as the 2021 Franklin County Teacher of the Year [HERE](#)

Community COVID-19 Health and Safety Q and A

Date: Thursday, February 4th

Time: 7 pm

Location: [Zoom](#)

Topic: COVID-19

Presented by the RSU 9 Nursing Team. If you have specific questions or topics that you would like answered or covered, please complete this [google form](#).

Need Tech Help?

Check out our [resources for students and families](#). Not finding an answer to your question in our resources? Connect with us!

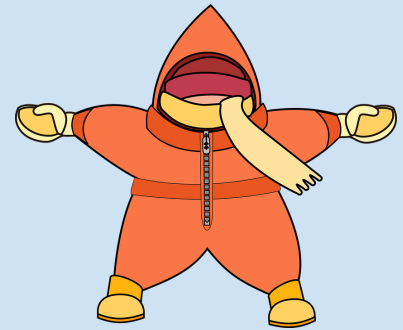
- Send an email to techhelp@mtbluersd.org (the message must be sent from a mtbluersd.org email address).
- If you are having trouble with your email account, or you do not know the login information for your student account, you can contact us by phone at 207-779-9888 (Monday - Thursday 7:30 am to 2:30 pm; Friday 7:30 am to 12 pm).

Important Dates Coming Up!

- ★ Tuesday, February 2nd: Groundhog Day
- ★ Thursday, February 4th: Community COVID Health and Safety Q and A-7 pm-See Zoom link noted above.
- ★ Friday, February 5th: Go Red for Heart Health
- ★ Sunday, February 14th: Valentine's Day
- ★ Monday, February 15th: Presidents' Day
 - First Day of Winter Break (2/15 - 2/19)
- ★ Monday, February 22nd
 - **GOLD** Day!

RSU 9 Budget Information

The FY22 budget development timeline and process are posted on the district's [2021/22 Budget Information](#) webpage. Documents, presentations, and other information related to the budget will be posted as available.



**Don't forget to bundle up
and get outside!**

Mark your calendar: February is Black History Month

Celebrate Black History with kids by reading [these stories](#) of African-Americans overcoming adversity and making their multicultural mark on the world.



Stay Connected

Join these sites and help us celebrate students and staff, and keep informed of district and education news.



<https://www.facebook.com/MBRSD/>



<http://www.mtbluersd.org/>